

2023 DEMOGRAPHICS

1 Mile | 3 Miles | 5 Miles



Population

11,078 | 85,422 | 248,012



Daytime Population

8,094 | 86,084 | 249,287



Median Household Income

\$145,332 | \$130,137 | \$119,701

RETAIL FOR SALE OR LEASE

9850 Manchester Road | Rock Hill, Missouri 63119

6,908 SF | Lease Rate: \$16.50/SF, NNN

Sale Price: \$1,200,000

PROPERTY DETAILS

Conveniently located along one of St. Louis's most heavily traveled thoroughfares

Excellent visibility and access from Manchester Road

Manchester Road - 20,165 VPD

Lauren Berry, CCIM

314.785.7632

lberry@paceproperties.com

Carl Day, CCIM

314.785.7624

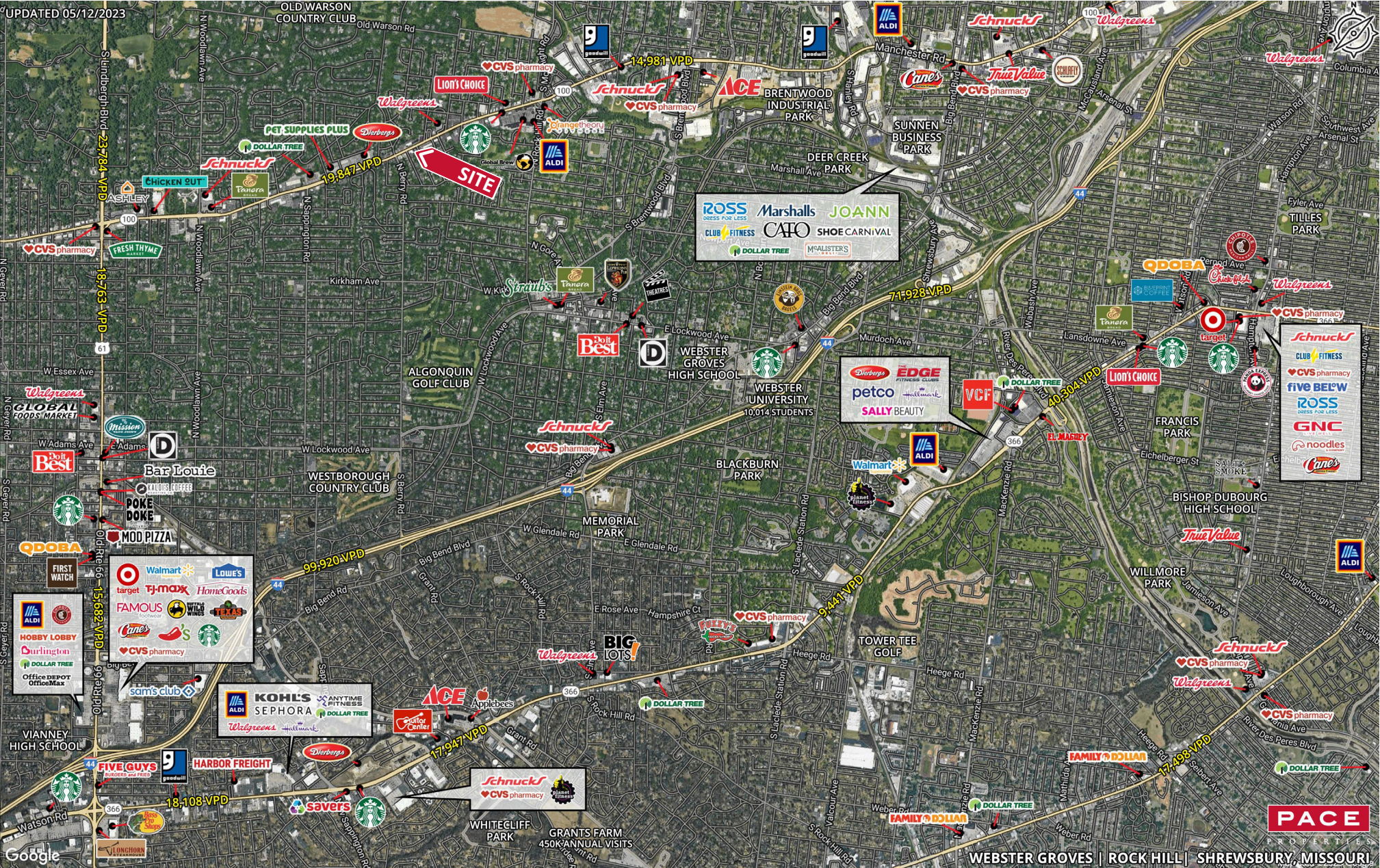
cday@paceproperties.com

PACEPROPERTIES.COM | 314.968.9898

1401 South Brentwood Boulevard, Suite 900 | St. Louis, Missouri 63144

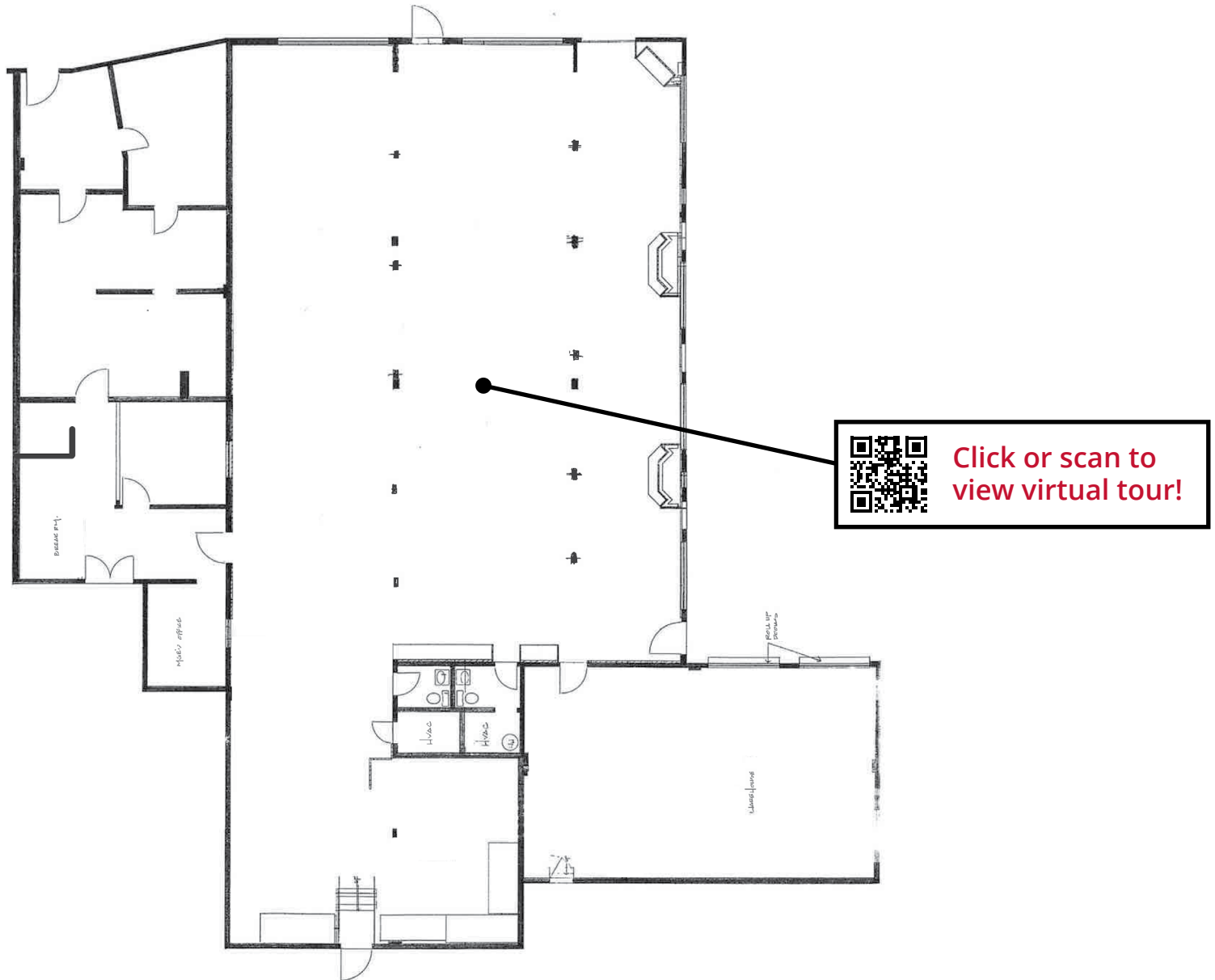
The information contained herein is not warranted, although it has been obtained from the owner/landlord of the subject property or from other sources that Pace Properties, Inc. deems reliable, and is subject to change without notice. Owner/landlord and Pace Properties, Inc. make no representations as to the environmental condition of the subject property and recommend tenant's independent investigation.

Trade Area Aerial



The information contained herein is not warranted, although it has been obtained from the owner/landlord of the subject property or from other sources that Pace Properties, Inc. deems reliable, and is subject to change without notice. Owner/landlord and Pace Properties, Inc. make no representations as to the environmental condition of the subject property and recommend tenant's independent investigation.

Site Plan



PACEPROPERTIES.COM | 314.968.9898

1401 South Brentwood Boulevard, Suite 900 | St. Louis, Missouri 63144

The information contained herein is not warranted, although it has been obtained from the owner/landlord of the subject property or from other sources that Pace Properties, Inc. deems reliable, and is subject to change without notice. Owner/landlord and Pace Properties, Inc. make no representations as to the environmental condition of the subject property and recommend tenant's independent investigation.

