

2022 DEMOGRAPHICS

5 Mile | 10 Miles | 15 Miles



Population

5,084 | 14,247 | 49,097



Daytime Population

3,431 | 9,537 | 42,037



Median Household Income

\$70,287 | \$68,381 | \$61,504

RETAIL FOR LEASE OR SALE

101 South Broadway Street, Goreville, Illinois 62939

8,338 SF | 0.83 Acres | Call for Details

PROPERTY DETAILS

Former Dollar Store

Situated at hard corner with great access

Located in Goreville, IL, home to the Shawnee National Forest
(nearly 1 million annual visitors)

Great signage & visibility

Lauren Berry

314.785.7632

lberry@paceproperties.com

John Shuff

314.785.7630

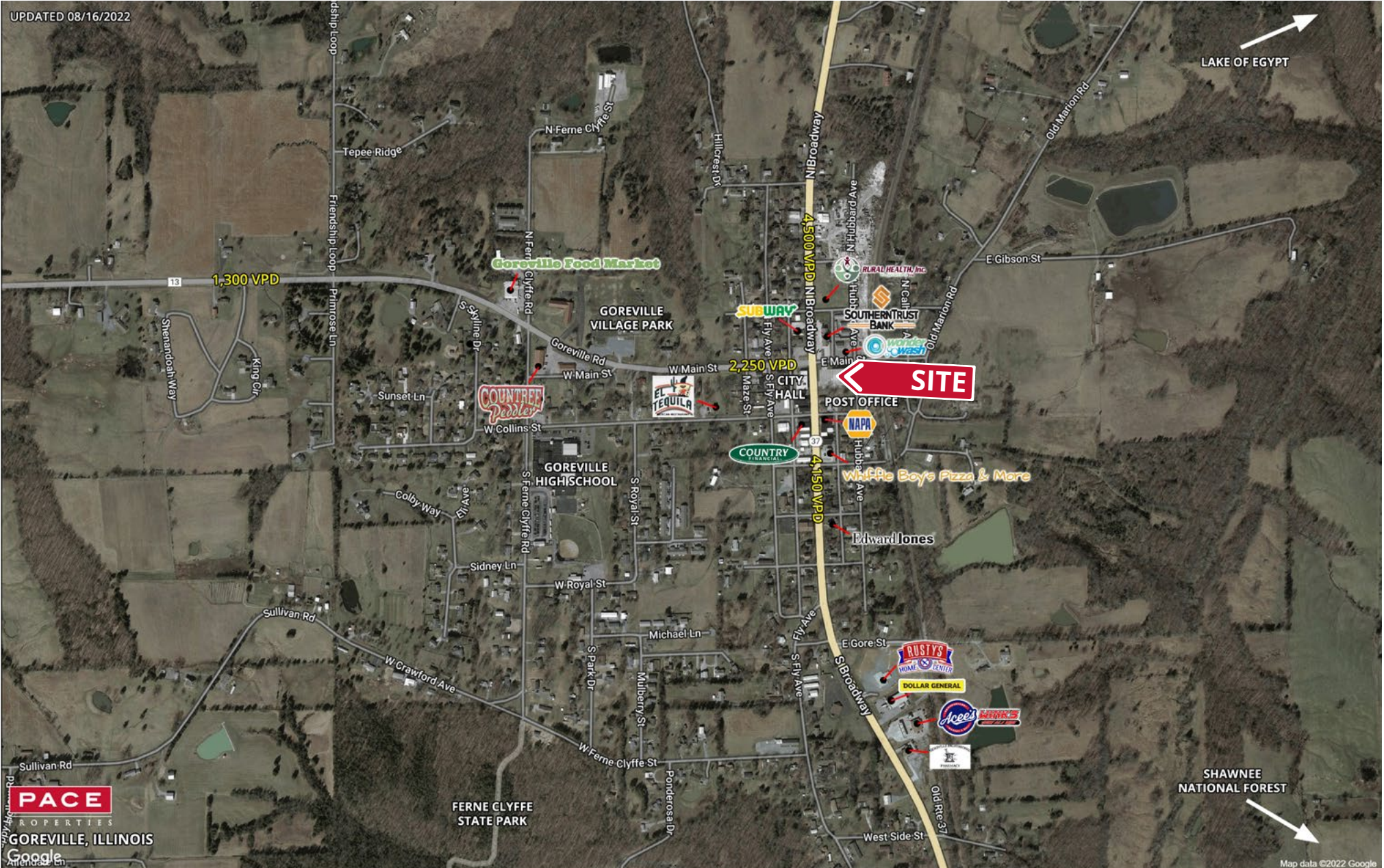
jshuff@paceproperties.com

PACEPROPERTIES.COM | 314.968.9898

1401 South Brentwood Boulevard, Suite 900 | St. Louis, Missouri 63144

The information contained herein is not warranted, although it has been obtained from the owner/landlord of the subject property or from other sources that Pace Properties, Inc. deems reliable, and is subject to change without notice. Owner/landlord and Pace Properties, Inc. make no representations as to the environmental condition of the subject property and recommend tenant's independent investigation.

Trade Area Aerial



PACEPROPERTIES.COM | 314.968.9898

1401 South Brentwood Boulevard, Suite 900 | St. Louis, Missouri 63144

The information contained herein is not warranted, although it has been obtained from the owner/landlord of the subject property or from other sources that Pace Properties, Inc. deems reliable, and is subject to change without notice. Owner/landlord and Pace Properties, Inc. make no representations as to the environmental condition of the subject property and recommend tenant's independent investigation.

