

Downtown Hillsboro!



2022 DEMOGRAPHICS

5 Mile | 10 Miles | 15 Miles



Population

16,331 | 81,121 | 156,617



Daytime Population

8,943 | 45,595 | 74,459



Median Household Income

\$77,646 | \$66,792 | \$71,254

FOR SALE OR LEASE

10610 Business 21 | Hillsboro, Missouri 63050

3,674 SF on 0.89 Acres | Sale Price: \$750,000 | Lease Rate: \$65,000/Yr, NNN

PROPERTY DETAILS

Free-standing restaurant building with drive-thru

3,674 sqft building on 0.89 acres

56 Parking Spaces (15:1,000) | Zoning: C-2

SEC Business 21 at Main Street - Downtown Hillsboro

Tables, cooler/freezer, & hoods included

Jim Rosen

314.785.7625

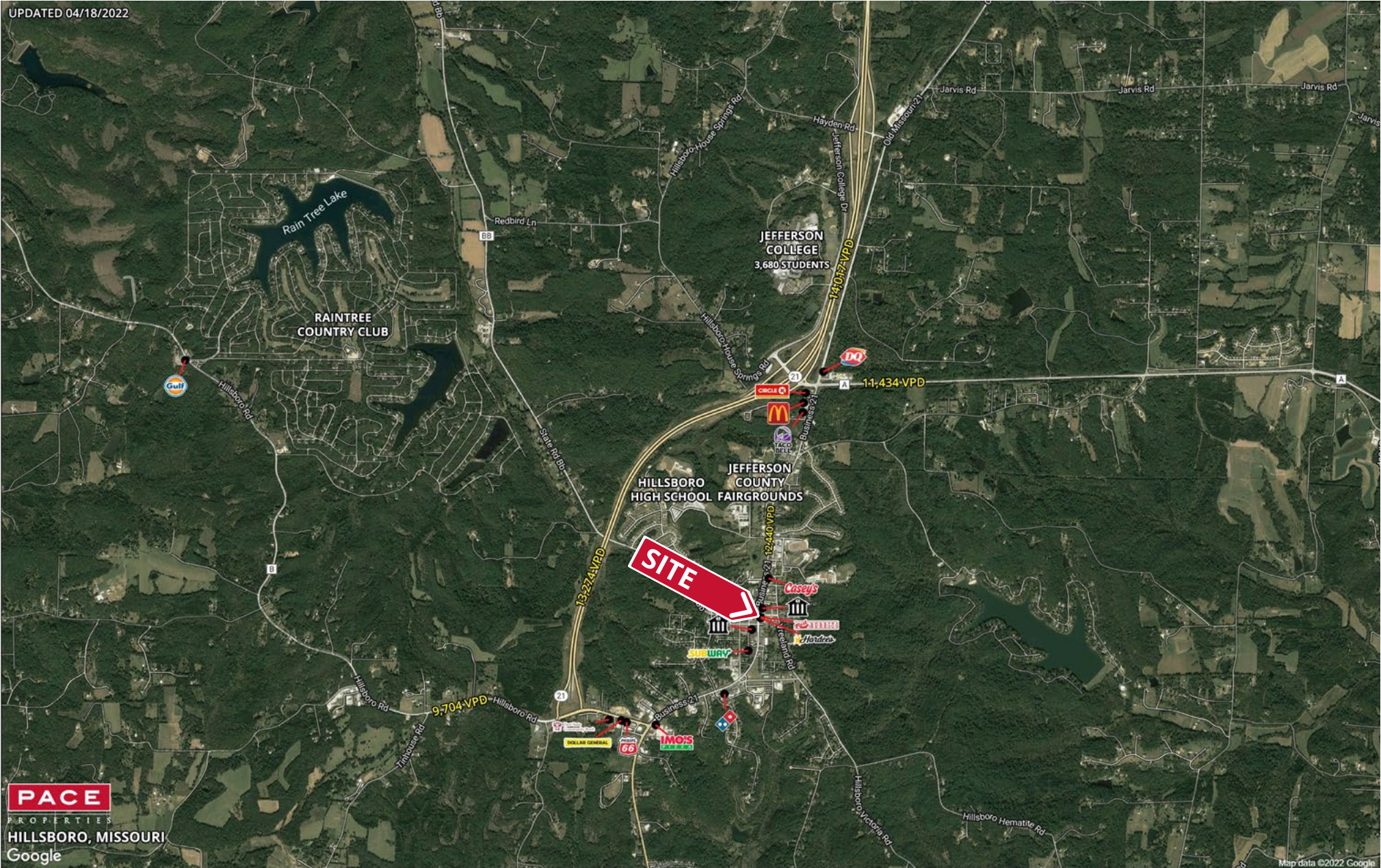
jrosen@paceproperties.com

PACEPROPERTIES.COM | 314.968.9898

1401 South Brentwood Boulevard, Suite 900 | St. Louis, Missouri 63144

The information contained herein is not warranted, although it has been obtained from the owner/landlord of the subject property or from other sources that Pace Properties, Inc. deems reliable, and is subject to change without notice. Owner/landlord and Pace Properties, Inc. make no representations as to the environmental condition of the subject property and recommend tenant's independent investigation.

Trade Area Aerial



PACEPROPERTIES.COM | 314.968.9898

1401 South Brentwood Boulevard, Suite 900 | St. Louis, Missouri 63144

The information contained herein is not warranted, although it has been obtained from the owner/landlord of the subject property or from other sources that Pace Properties, Inc. deems reliable, and is subject to change without notice. Owner/landlord and Pace Properties, Inc. make no representations as to the environmental condition of the subject property and recommend tenant's independent investigation.

