

2024 DEMOGRAPHICS

1 Mile | 3 Miles | 5 Miles



Population

8,554 | 48,315 | 120,912



Daytime Population

3,993 | 25,959 | 75,868



Median Household Income

\$65,739 | \$49,173 | \$50,241



RETAIL FOR SALE

10858 Lilac Avenue | St. Louis, Missouri 63137

2,765 SF on 1.06 Acre | Sale Price: \$545,000

PROPERTY DETAILS

Free-standing former QSR with drive thru on interstate corner

Kitchen Infrastructure included
(hoods, walk-in cooler/freezer, etc)

Zoned C-8 Planned Commerical (St. Louis County)

67 parking spaces

Lilac Avenue - 8,560 VPD

Jim Rosen, CCIM

314.785.7625

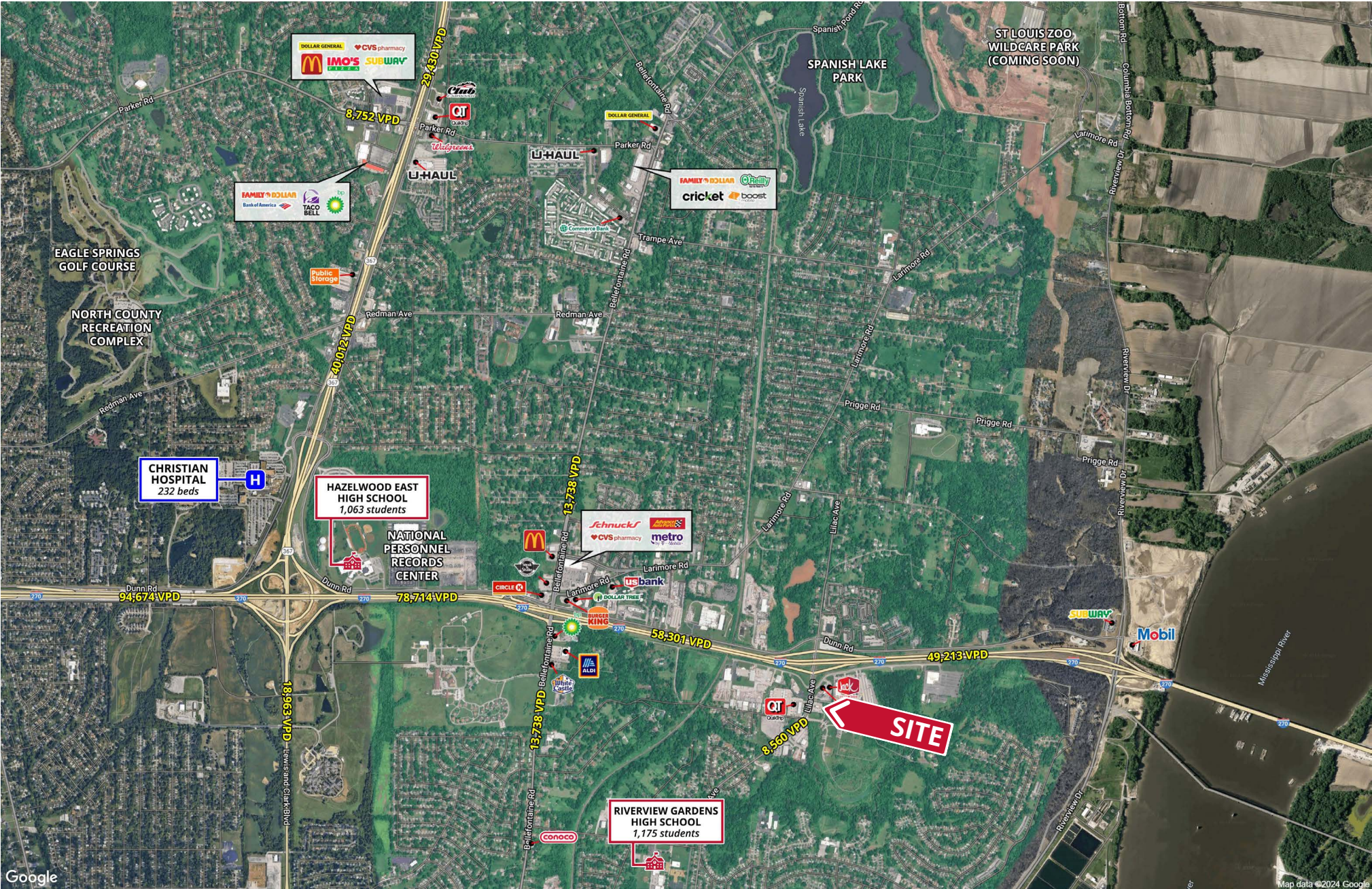
jrosen@paceproperties.com

PACEPROPERTIES.COM | 314.968.9898

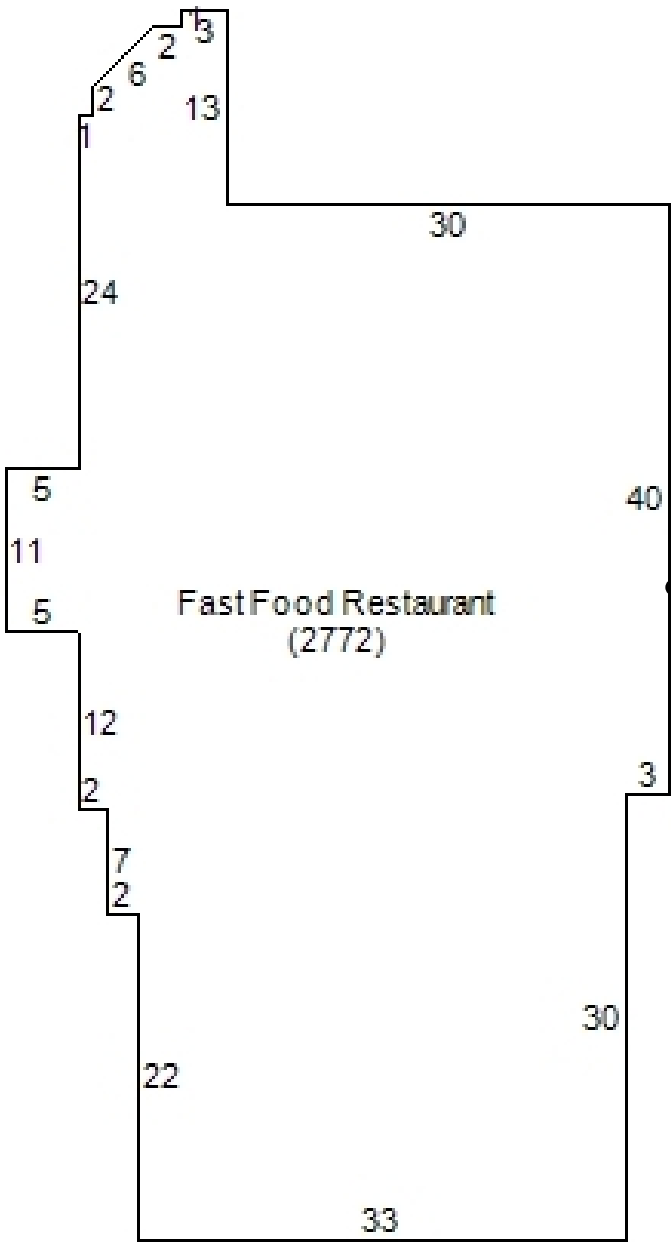
1401 South Brentwood Boulevard, Suite 900 | St. Louis, Missouri 63144

The information contained herein is not warranted, although it has been obtained from the owner/landlord of the subject property or from other sources that Pace Properties, Inc. deems reliable, and is subject to change without notice. Owner/landlord and Pace Properties, Inc. make no representations as to the environmental condition of the subject property and recommend tenant's independent investigation.

Trade Area Aerial



Site Plan



Click or scan to
view virtual tour!

