



## 2023 DEMOGRAPHICS

1 Mile | 3 Miles | 5 Miles



### Population

2,199 | 16,997 | 19,682



### Daytime Population

2,492 | 17,402 | 20,780



### Median Household Income

\$65,152 | \$55,864 | \$57,834

# RETAIL FOR LEASE

1305 South Main Street | Sikeston, Missouri 63801

8,060 SF | \$12.50/SF, NNN | Triple Nets: \$4.22/SF (2024 estimate)

## PROPERTY DETAILS

Strong visibility along South Main Street and Highway 60

Signalized intersection on Walmart outlot

Pylon signage and tremendous sign exposure

Phenomenal corner within primary trade area

South Main Street - 15,715 VPD | Highway 60 - 14,353 VPD

**Kate Grewe**

314.785.7662

kgrewe@paceproperties.com

**Patrick Willett**

314.785.7631

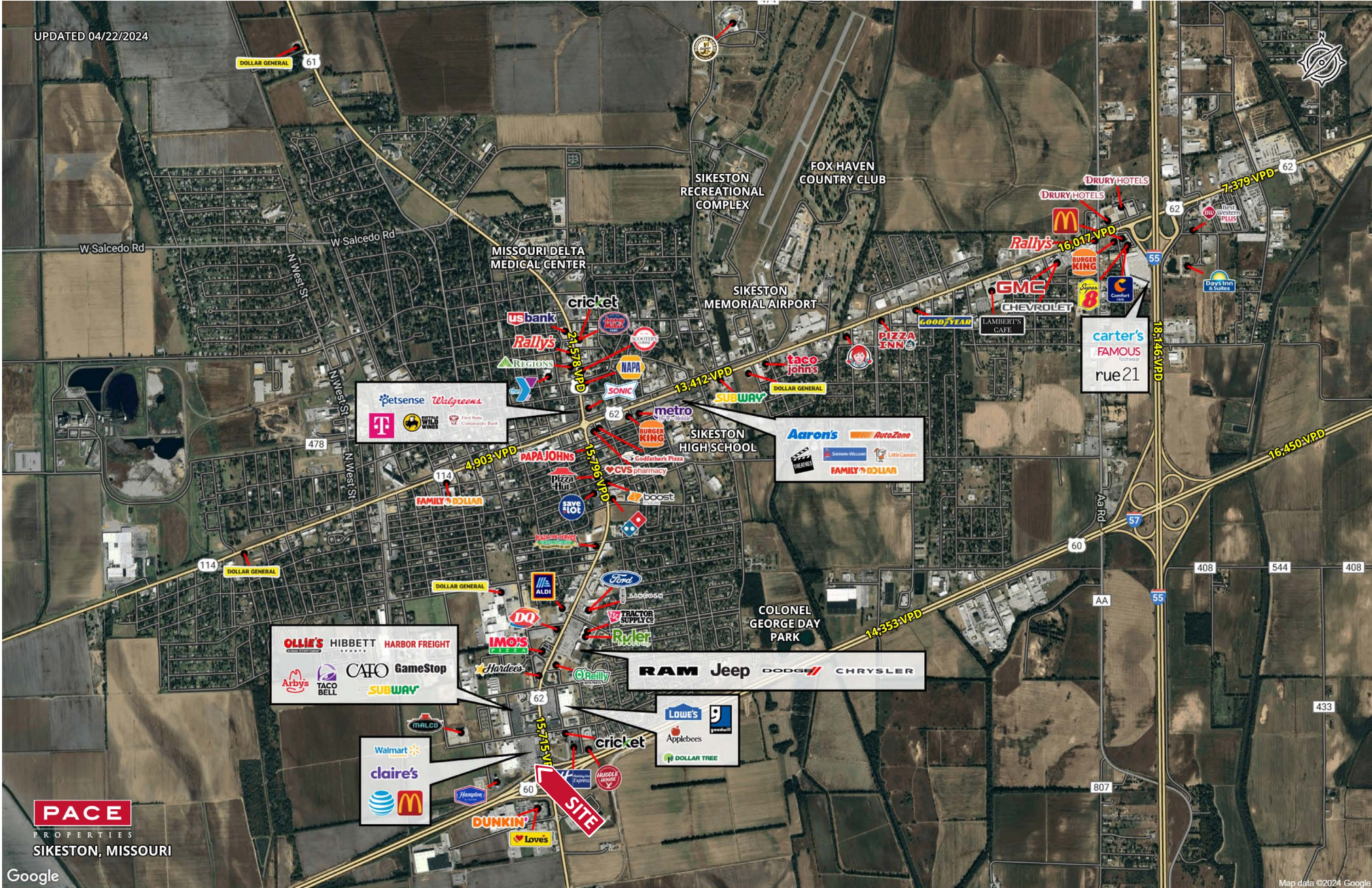
pwillett@paceproperties.com

PACEPROPERTIES.COM | 314.968.9898

1401 South Brentwood Boulevard, Suite 900 | St. Louis, Missouri 63144

The information contained herein is not warranted, although it has been obtained from the owner/landlord of the subject property or from other sources that Pace Properties, Inc. deems reliable, and is subject to change without notice. Owner/landlord and Pace Properties, Inc. make no representations as to the environmental condition of the subject property and recommend tenant's independent investigation.

# Trade Area Aerial



Google

Map data ©2024 Google

**PACE**  
PROPERTIES  
SIKESTON, MISSOURI

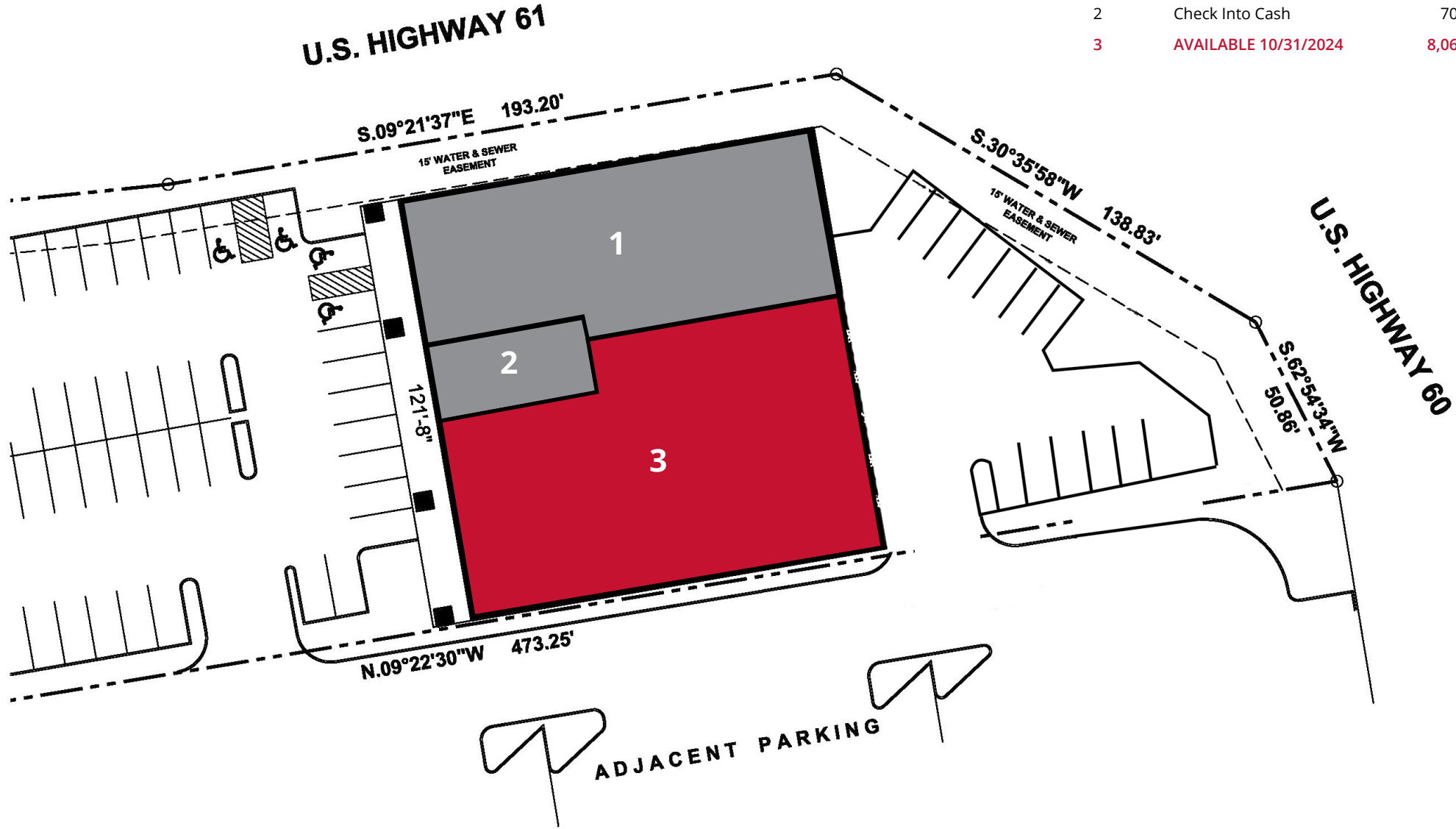
PACEPROPERTIES.COM | 314.968.9898

1401 South Brentwood Boulevard, Suite 900 | St. Louis, Missouri 63144

The information contained herein is not warranted, although it has been obtained from the owner/landlord of the subject property or from other sources that Pace Properties, Inc. deems reliable, and is subject to change without notice. Owner/landlord and Pace Properties, Inc. make no representations as to the independent condition of the subject property and recommend tenant's independent investigation.

# Site Plan

Space	Status	SF
1	AT&T	5,640
2	Check Into Cash	700
3	AVAILABLE 10/31/2024	8,060



The information contained herein is not warranted, although it has been obtained from the owner/landlord of the subject property or from other sources that Pace Properties, Inc. deems reliable, and is subject to change without notice. Owner/landlord and Pace Properties, Inc. make no representations as to the environmental condition of the subject property and recommend tenant's independent investigation.