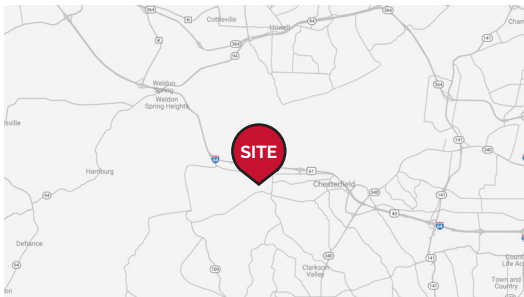




OFFICE/WAREHOUSE FOR LEASE

17813 Edison Avenue | Chesterfield, Missouri 63005
2,222 - 6,985 SF | \$15.00/SF, MG (CAM Included)



Mark Dorsey

314.785.7623 | mdorsey@paceproperties.com

Elise Bozzi

314.785.7624 | ebozzi@paceproperties.com

PROPERTY DETAILS

Tenant responsible for utilities and janitorial

Executive suites available

Corner offices

Monument signage

ADA accessible elevator

Built in 2002

Wet sprinkler system

Parking: 3.5/1,000

Ceiling Height: 25'

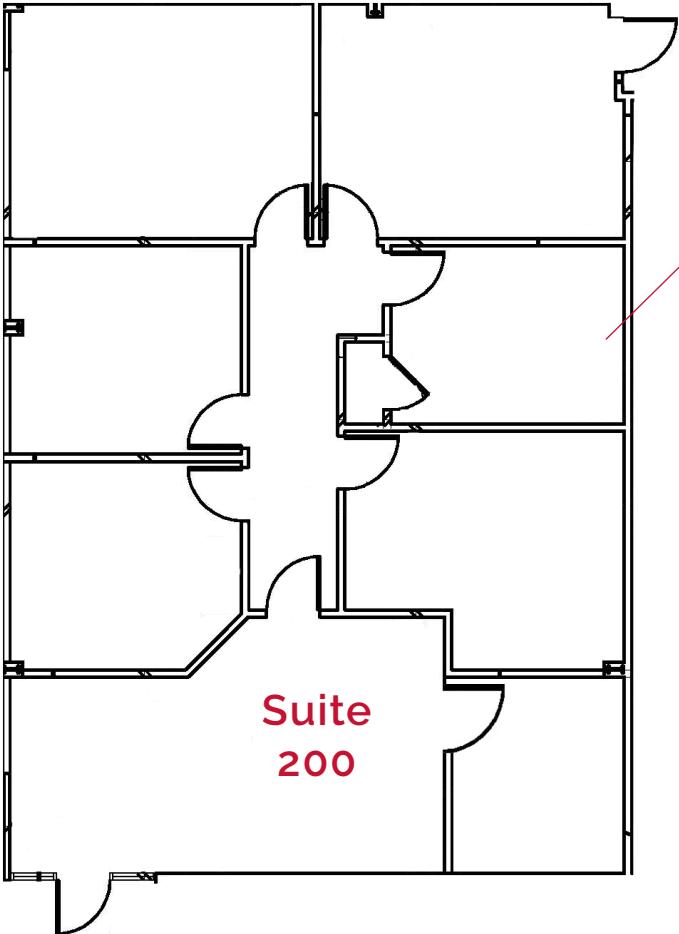
Electrical: 3-phase, heavy

PACEPROPERTIES.COM | 314.968.9898

1401 South Brentwood Boulevard, Suite 900 | St. Louis, Missouri 63144

The information contained herein is not warranted, although it has been obtained from the owner/landlord of the subject property or from other sources that Pace Properties, Inc. deems reliable, and is subject to change without notice. Owner/landlord and Pace Properties, Inc. make no representations as to the environmental condition of the subject property and recommend tenant's independent investigation.

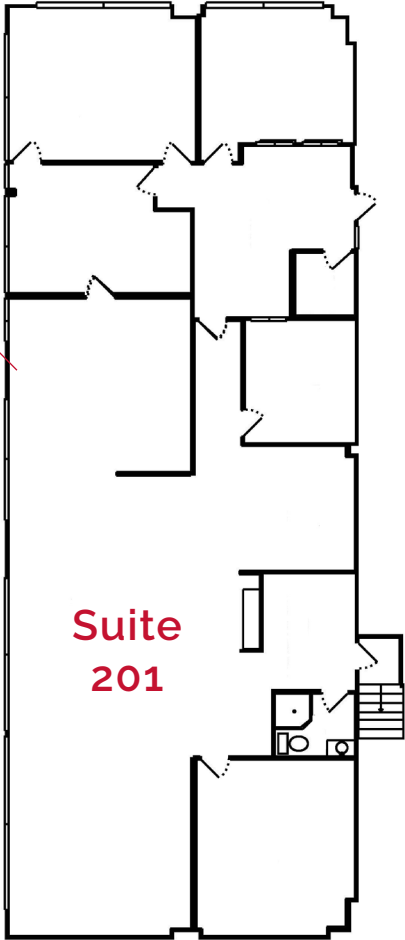
Floorplans



Suite 200

- 2,221 SF available
- Large reception
- Staff lounge
- 3 executive offices
- Large conference room

Can be combined for
6,985 SF



Suite 201

- 4,764 SF available
- Large bullpen area
- 2 executive offices
- Large conference room
- Full Kitchen
- Private bath with shower
- Stairway to rear lot