



2024 DEMOGRAPHICS

1 Mile | 3 Miles | 5 Miles



Population

6,172 | 17,035 | 19,572



Daytime Population

5,571 | 15,585 | 17,560



Median Household Income

\$58,122 | \$48,175 | \$49,180



RETAIL FOR LEASE

2110 - 2206 South Baltimore Street | Kirksville, Missouri 63501

1,320 - 31,875 SF | Lease Rate: \$5.00-15.00/SF

Triple Nets: \$3.00/SF

PROPERTY DETAILS

Great visibility on highly traveled Baltimore Street

Two outlots available (0.90 - 0.91 Acres), drive-thru approved

Strong secondary market

Less than 1 mile from Truman State University

Baltimore Street - 7,264 VPD

Ashley Krekovich

314.785.7613

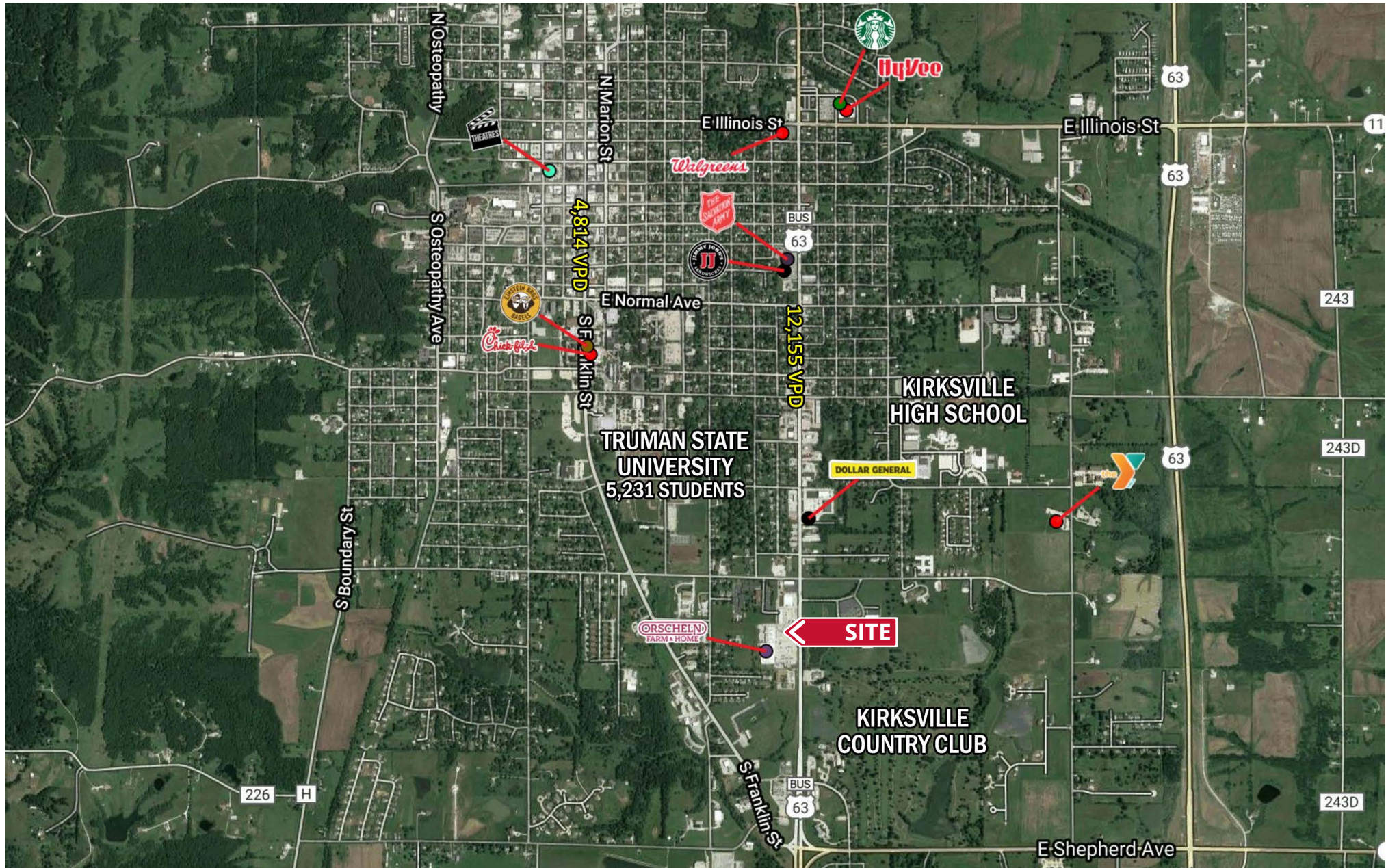
akrekovich@paceproperties.com

PACEPROPERTIES.COM | 314.968.9898

1401 South Brentwood Boulevard, Suite 900 | St. Louis, Missouri 63144

The information contained herein is not warranted, although it has been obtained from the owner/landlord of the subject property or from other sources that Pace Properties, Inc. deems reliable, and is subject to change without notice. Owner/landlord and Pace Properties, Inc. make no representations as to the environmental condition of the subject property and recommend tenant's independent investigation.

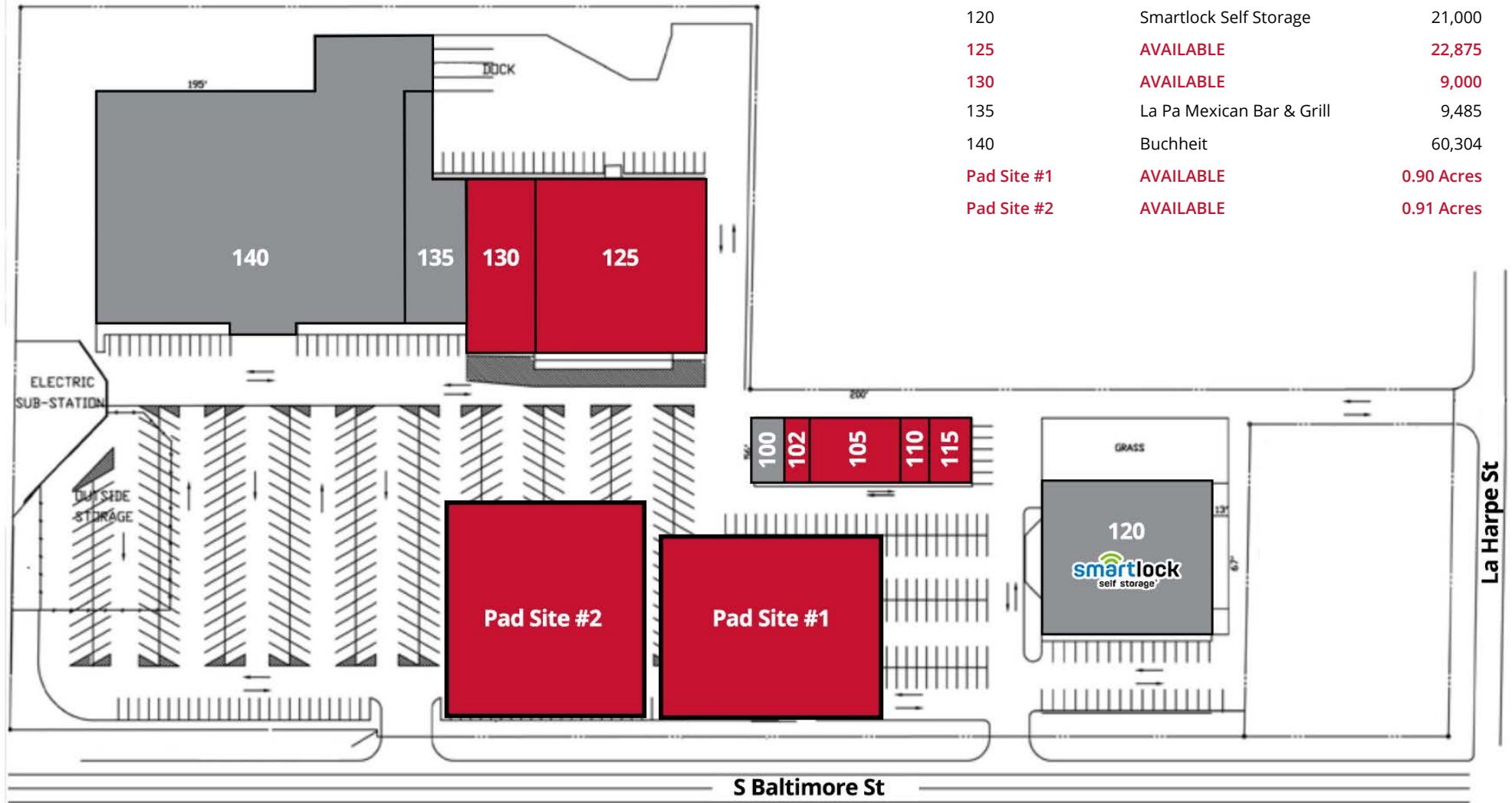
Trade Area Aerial



Site Plan



Click or scan to
view site photos!



Space	Status	SF
100	US Cellular	1,375
102	AVAILABLE	1,375
105	AVAILABLE	4,500
110	AVAILABLE	1,320
115	AVAILABLE	2,424
120	Smartlock Self Storage	21,000
125	AVAILABLE	22,875
130	AVAILABLE	9,000
135	La Pa Mexican Bar & Grill	9,485
140	Buchheit	60,304
Pad Site #1	AVAILABLE	0.90 Acres
Pad Site #2	AVAILABLE	0.91 Acres