

## 2025 DEMOGRAPHICS

1 Mile | 3 Miles | 5 Miles



### Population

13,476 | 121,685 | 265,138



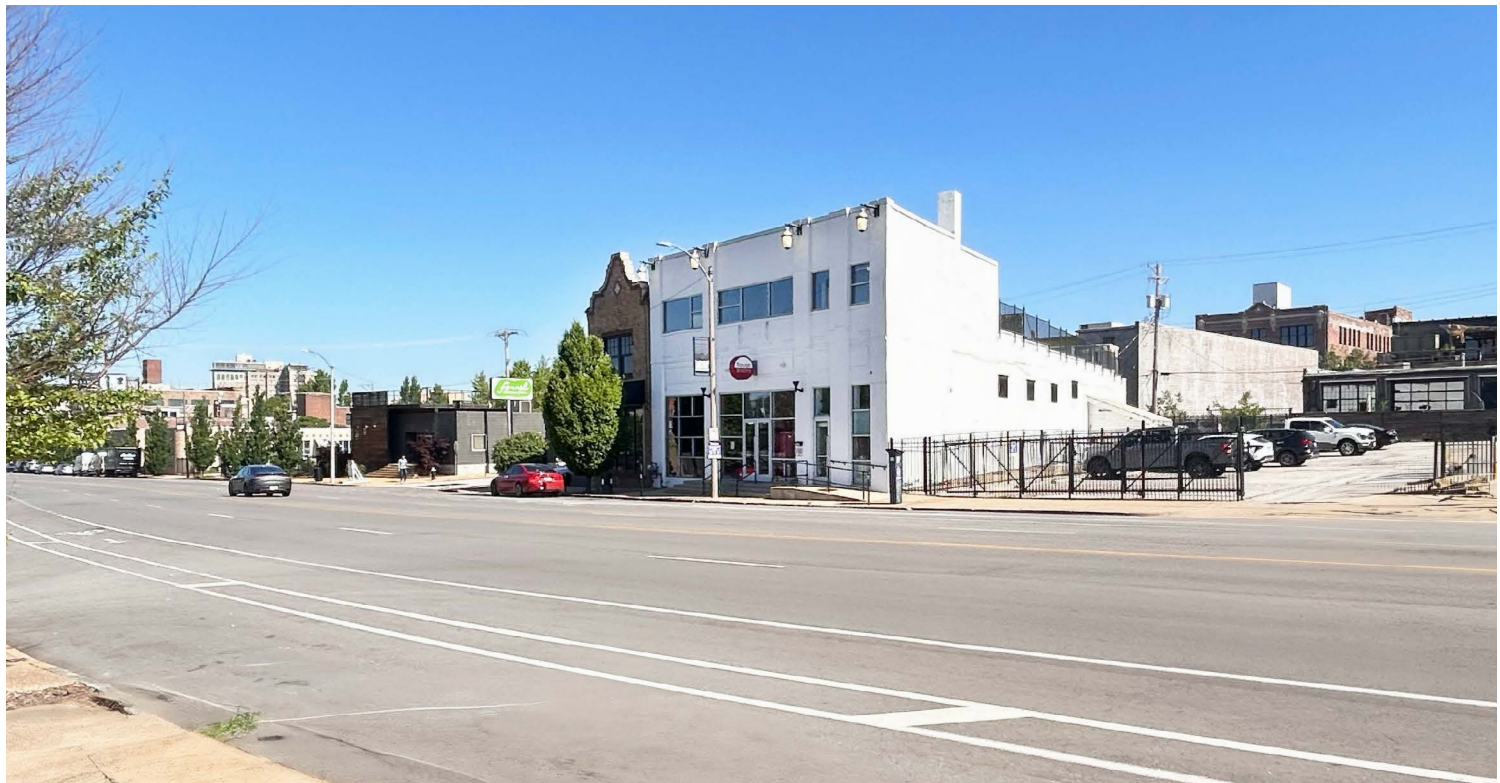
### Daytime Population

28,022 | 159,156 | 265,033



### Average Household Income

\$54,634 | \$94,927 | \$88,811



## MIXED-USE FOR SALE

3037 Olive Street | St. Louis, Missouri 63103

10,884 SF | Sale Price: \$495,000

### PROPERTY DETAILS

Excellent Midtown location in one of St. Louis's top commercial Districts

Close proximity to Saint Louis University & Harris-Stowe State University

Retail or office versatility

Immediately adjacent to city parking lot

Rooftop deck

**Carl Day, CCIM**

314.785.7624

cday@paceproperties.com

[PACEPROPERTIES.COM](https://www.paceproperties.com) | 314.968.9898

1401 South Brentwood Boulevard, Suite 900 | St. Louis, Missouri 63144

The information contained herein is not warranted, although it has been obtained from the owner/landlord of the subject property or from other sources that Pace Properties, Inc. deems reliable, and is subject to change without notice. Owner/landlord and Pace Properties, Inc. make no representations as to the environmental condition of the subject property and recommend tenant's independent investigation.



[illegible]



