

2024 DEMOGRAPHICS

1 Mile | 3 Miles | 5 Miles



Population

20,299 | 134,340 | 334,147



Daytime Population

16,828 | 155,487 | 324,739



Median Household Income

\$77,661 | \$78,013 | \$71,664



RETAIL/OFFICE FOR LEASE

350 North Skinker Boulevard | St. Louis, Missouri 63130

1,761 SF | Call for Details

PROPERTY DETAILS

Street-level retail or office opportunity on ground floor
of mixed-use residential building with 65 units

Located just blocks from Washington University and
at the entrance to the Delmar Loop

Potential for designated parking

North Skinker Boulevard - 18,972 VPD

Kate Grewe

314.785.7662

kgrewe@paceproperties.com

Lauren Berry, CCIM

314.785.7632

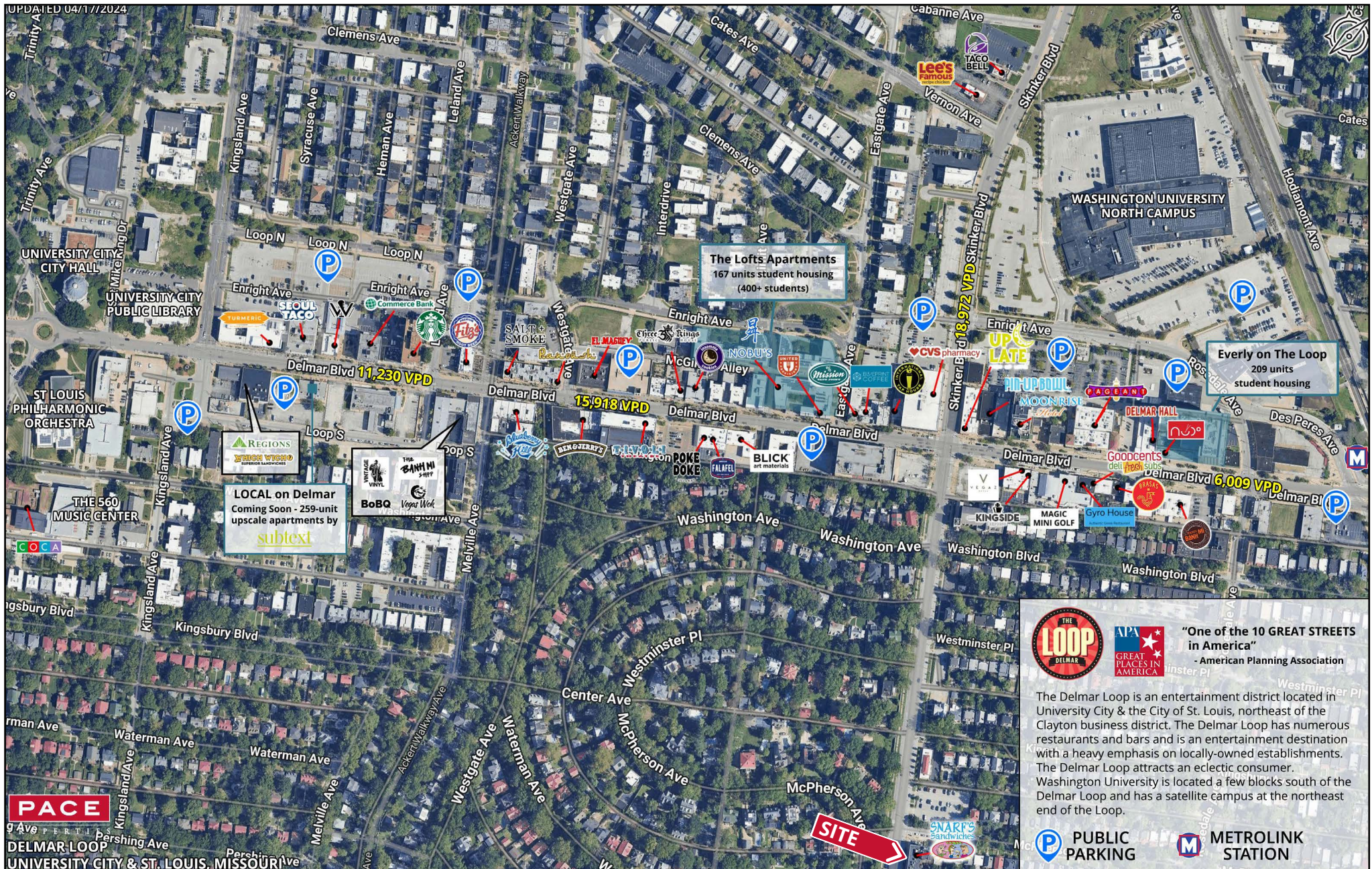
lberry@paceproperties.com

PACEPROPERTIES.COM | 314.968.9898

1401 South Brentwood Boulevard, Suite 900 | St. Louis, Missouri 63144

The information contained herein is not warranted, although it has been obtained from the owner/landlord of the subject property or from other sources that Pace Properties, Inc. deems reliable, and is subject to change without notice. Owner/landlord and Pace Properties, Inc. make no representations as to the environmental condition of the subject property and recommend tenant's independent investigation.

Trade Area Aerial

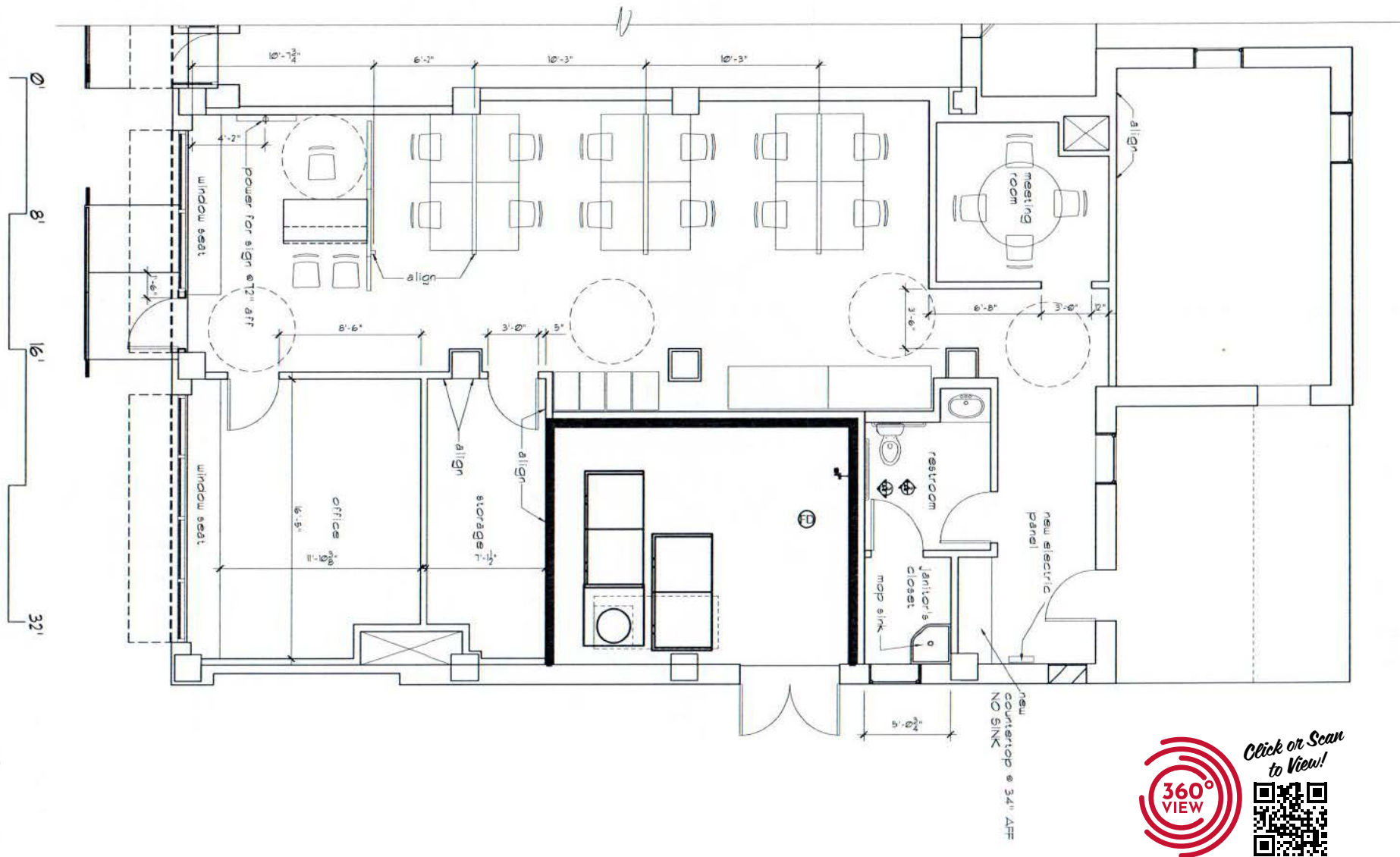


PACEPROPERTIES.COM | 314.968.9898

1401 South Brentwood Boulevard, Suite 900 | St. Louis, Missouri 63144

The information contained herein is not warranted, although it has been obtained from the owner/landlord of the subject property or from other sources that Pace Properties, Inc. deems reliable, and is subject to change without notice. Owner/landlord and Pace Properties, Inc. make no representations as to the environmental condition of the subject property and recommend tenant's independent investigation.

Floor Plan



PACEPROPERTIES.COM | 314.968.9898

1401 South Brentwood Boulevard, Suite 900 | St. Louis, Missouri 63144

The information contained herein is not warranted, although it has been obtained from the owner/landlord of the subject property or from other sources that Pace Properties, Inc. deems reliable, and is subject to change without notice. Owner/landlord and Pace Properties, Inc. make no representations as to the environmental condition of the subject property and recommend tenant's independent investigation.