

2025 DEMOGRAPHICS

1 Mile | 3 Miles | 5 Miles



Population

11,154 | 60,226 | 147,876



Daytime Population

6,125 | 37,393 | 98,088



Median Household Income

\$89,282 | \$86,442 | \$87,503

FLEX/RETAIL FOR LEASE

4412 - 4428 Telegraph Road | Unincorporated St. Louis County, Missouri 63129

1,016 - 2,390 SF | Call for Details

PROPERTY DETAILS

2nd-generation medical space or lower level
flex space available

Strong retail trade corridor with convenient access to I-255

Drive-in doors available on lower level

Retailers nearby include Schnucks, Dierbergs,
Walmart, McDonald's, & Taco Bell

Telegraph Road - 40,970 VPD

Richie Chappuis

314.785.7615

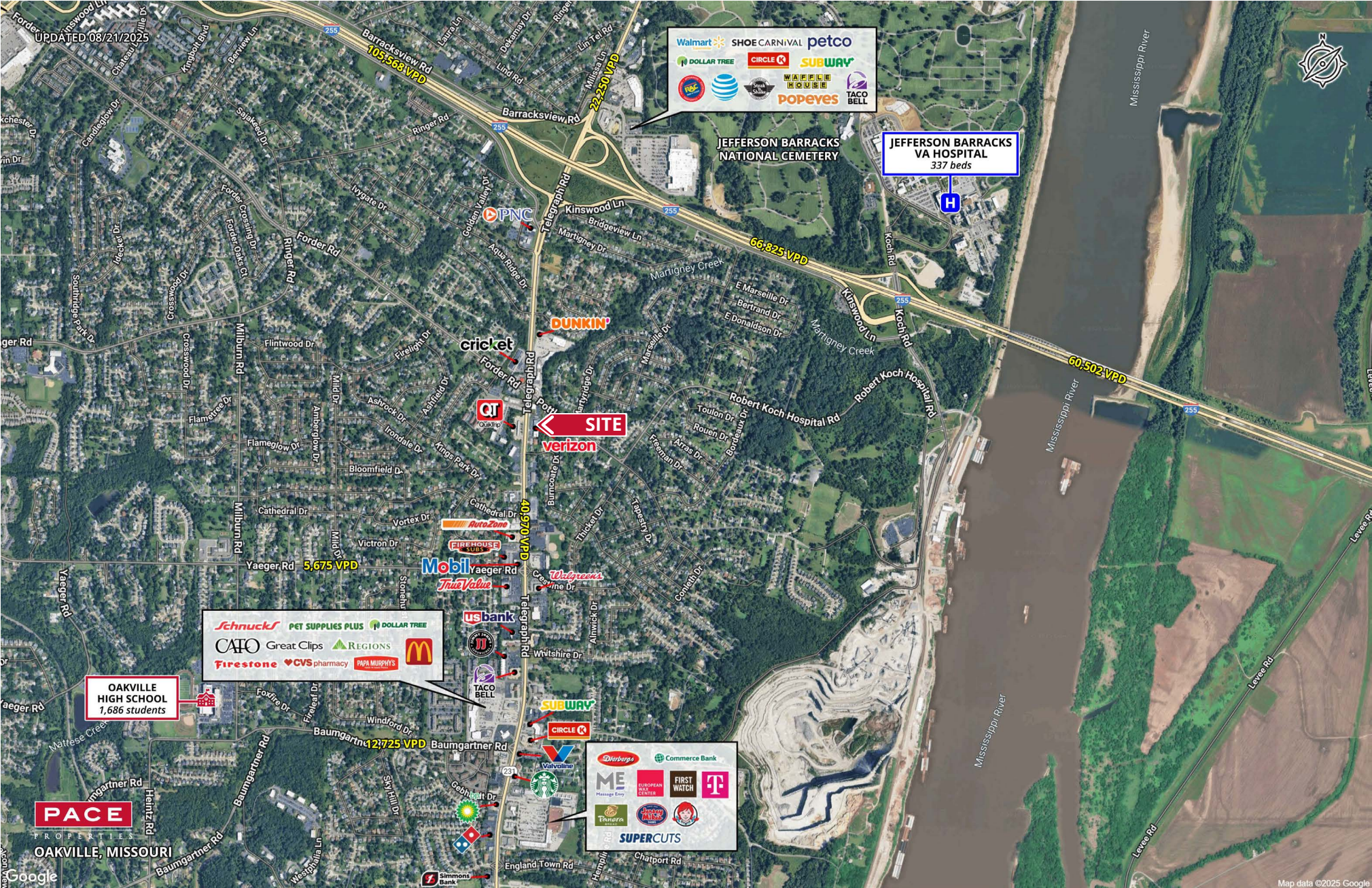
rchappuis@paceproperties.com

PACEPROPERTIES.COM | 314.968.9898

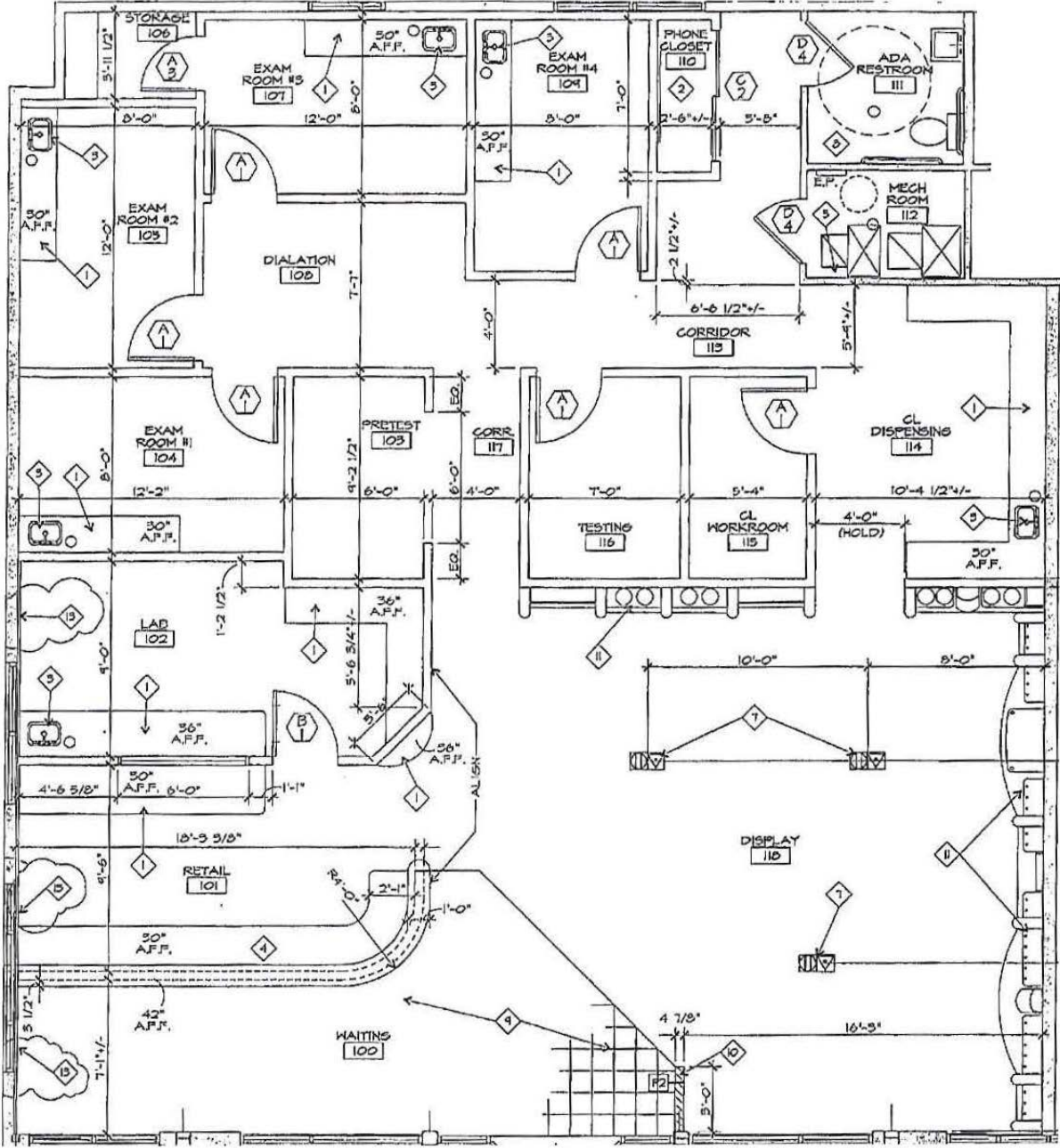
1401 South Brentwood Boulevard, Suite 900 | St. Louis, Missouri 63144

The information contained herein is not warranted, although it has been obtained from the owner/landlord of the subject property or from other sources that Pace Properties, Inc. deems reliable, and is subject to change without notice. Owner/landlord and Pace Properties, Inc. make no representations as to the environmental condition of the subject property and recommend tenant's independent investigation.

Trade Area Aerial

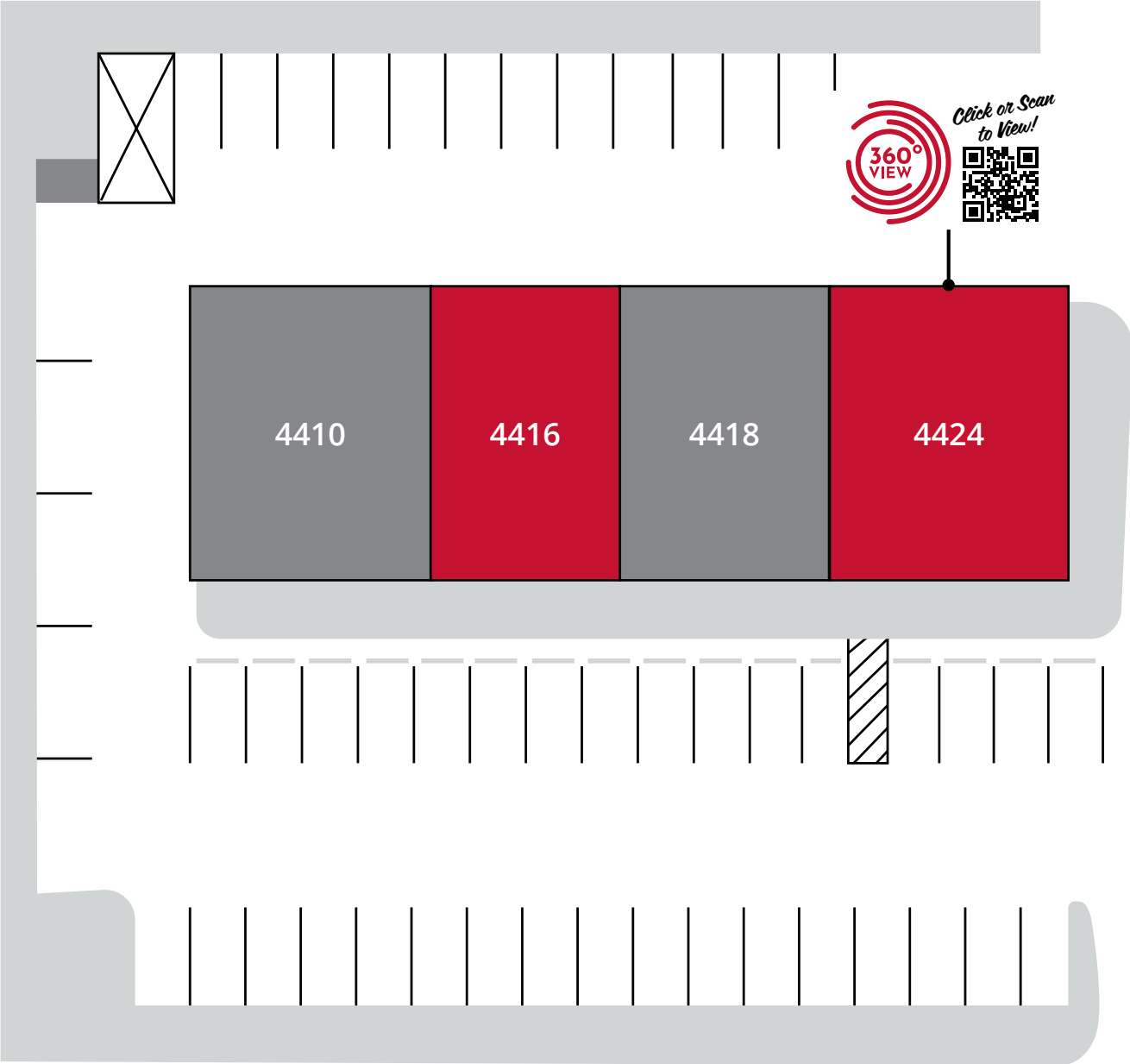


Floor Plan - Suite 4412 - 2,390 SF



Site Plan - Lower Level

Space	Status	SF
4410	STL Dent	2,021
4416	AVAILABLE	1,016
4418	Black Kat Dent Co	1,229
4424	AVAILABLE	2,021



Click or Scan to View!

TELEGRAPH ROAD