

2024 DEMOGRAPHICS

1 Mile | 3 Miles | 5 Miles



Population

21,924 | 131,076 | 325,312



Daytime Population

16,524 | 142,215 | 305,445



Median Household Income

\$88,468 | \$83,056 | \$75,441

RETAIL FOR LEASE

6372 - 6376 Delmar Boulevard | St. Louis, Missouri 63130
1,876 SF | Lease Rate: \$22.00/SF, NNN | Triple Nets: \$4.50/SF

PROPERTY DETAILS

Former Rocket Fizz

Located in the heart of the Delmar Loop

Many restaurants & entertainment venues within walking distance

Growing daytime population

Close proximity to top universities - Washington University,
St. Louis University & Fontbonne University

Delmar Boulevard - 15,918 VPD

Kate Grewe

314.785.7662

kgrewe@paceproperties.com

Lauren Berry, CCIM

314.785.7632

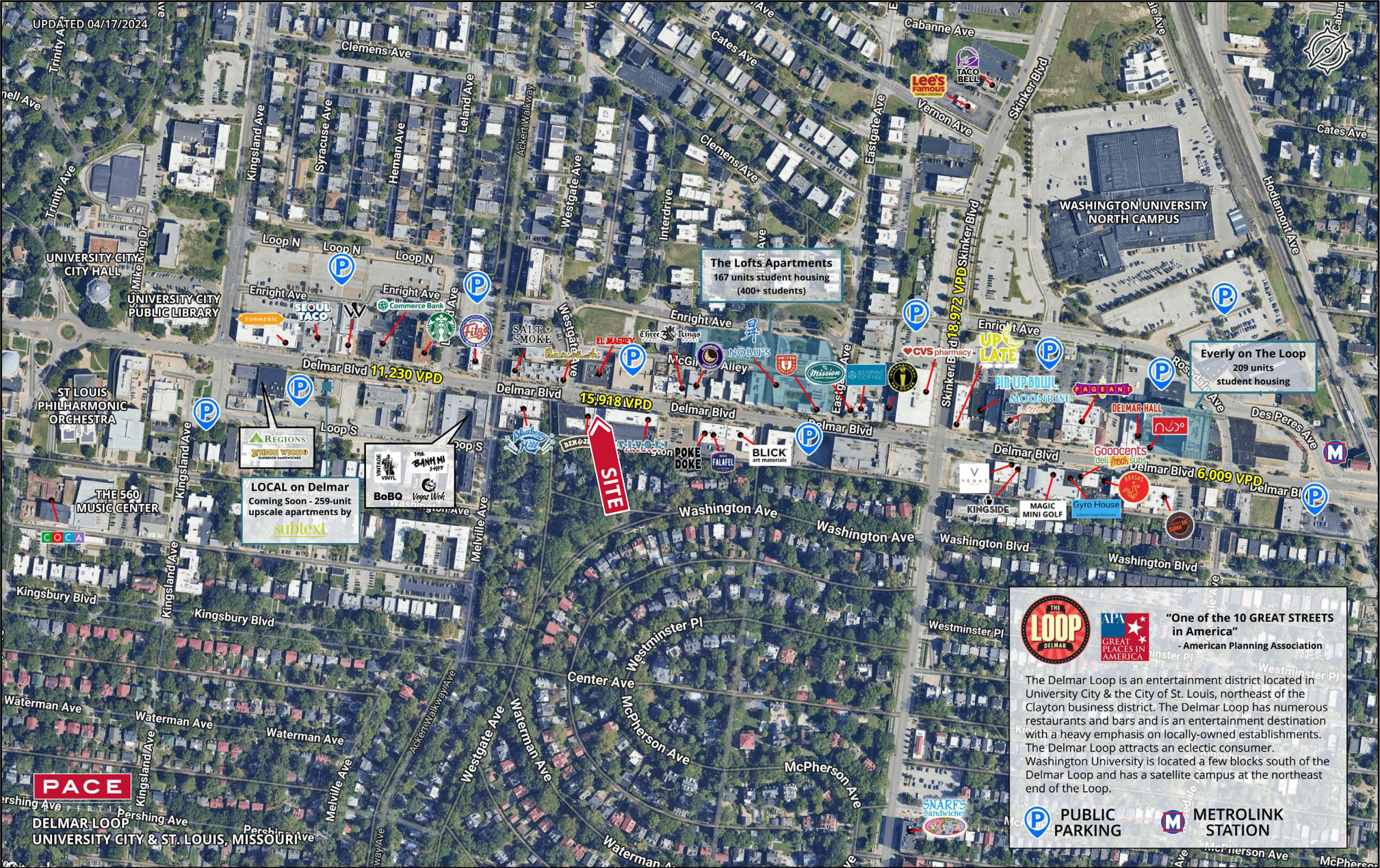
lberry@paceproperties.com

PACEPROPERTIES.COM | 314.968.9898

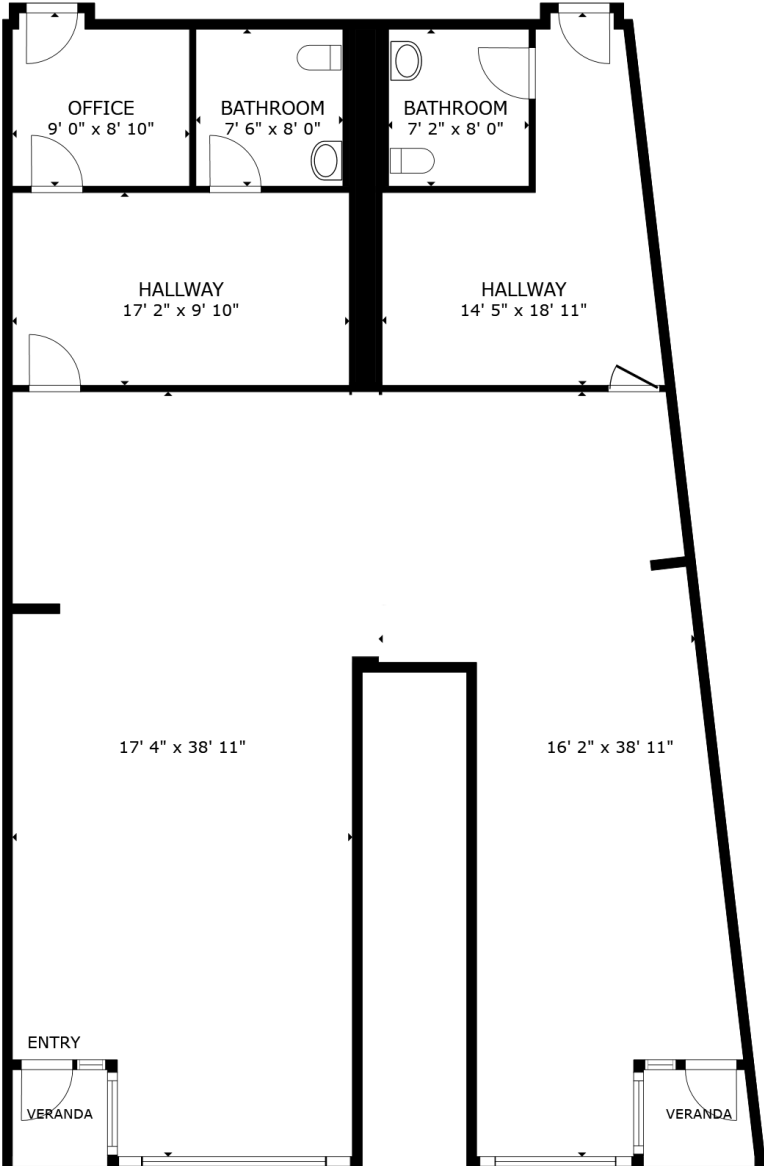
1401 South Brentwood Boulevard, Suite 900 | St. Louis, Missouri 63144

The information contained herein is not warranted, although it has been obtained from the owner/landlord of the subject property or from other sources that Pace Properties, Inc. deems reliable, and is subject to change without notice. Owner/landlord and Pace Properties, Inc. make no representations as to the environmental condition of the subject property and recommend tenant's independent investigation.

Trade Area Aerial



Floor Plan



FLOOR PLAN