

PROPERTY FOR SALE

6701 Antire Road

High Ridge, Missouri 63049

17,933 SF on 15.84 acres | Sale Price: \$1,200,000

PROPERTY DETAILS

Expansive 15.84-Acre Mixed-Use Property

A rare combination of commercial and residential zoning offering nearly 16 acres of versatile land - ideal for specialty users, expansion, redevelopment, or multiple revenue-generating uses.

Nearly 18,000 SF of Existing Commercial Improvements

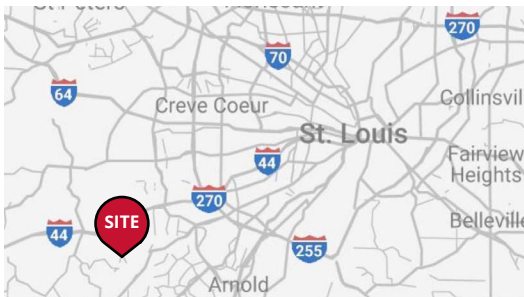
Includes training arenas, boarding buildings, retail/office areas, and support structures across 7 buildings - providing immediate functional value for a wide range of commercial, recreational, or institutional operators.

On-Site 1,629 SF Home for Owner/Manager Use or Rental Income

The included 4-bedroom residence enables a live-work setup or creates an additional rental revenue stream, increasing overall return potential.

Strong Demographics & Regional Stability

Located in a growing submarket with high household incomes, strong homeownership rates, and proximity to St. Louis - providing long-term demand for commercial use and future redevelopment upside.

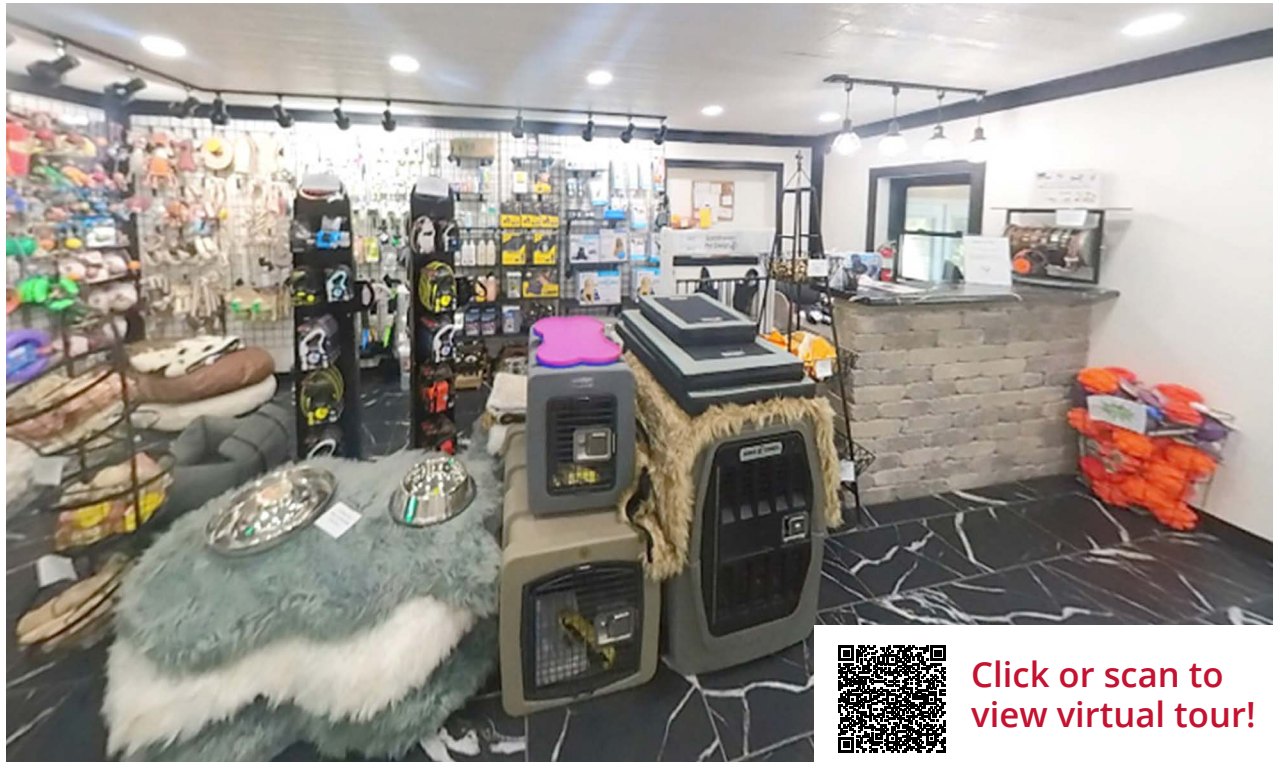


Carl Day, CCIM
314.785.7621
cday@paceproperties.com

PACEPROPERTIES.COM | 314.968.9898

1401 South Brentwood Boulevard, Suite 900 | St. Louis, Missouri 63144

The information contained herein is not warranted, although it has been obtained from the owner/landlord of the subject property or from other sources that Pace Properties, Inc. deems reliable, and is subject to change without notice. Owner/landlord and Pace Properties, Inc. make no representations as to the environmental condition of the subject property and recommend tenant's independent investigation.



Click or scan to view virtual tour!

Parcel Map



[PACEPROPERTIES.COM](https://www.paceproperties.com) | 314.968.9898

1401 South Brentwood Boulevard, Suite 900 | St. Louis, Missouri 63144

The information contained herein is not warranted, although it has been obtained from the owner/landlord of the subject property or from other sources that Pace Properties, Inc. deems reliable, and is subject to change without notice. Owner/landlord and Pace Properties, Inc. make no representations as to the environmental condition of the subject property and recommend tenant's independent investigation.