

2024 DEMOGRAPHICS

1 Mile | 3 Miles | 5 Miles



Population

11,602 | 100,750 | 237,943



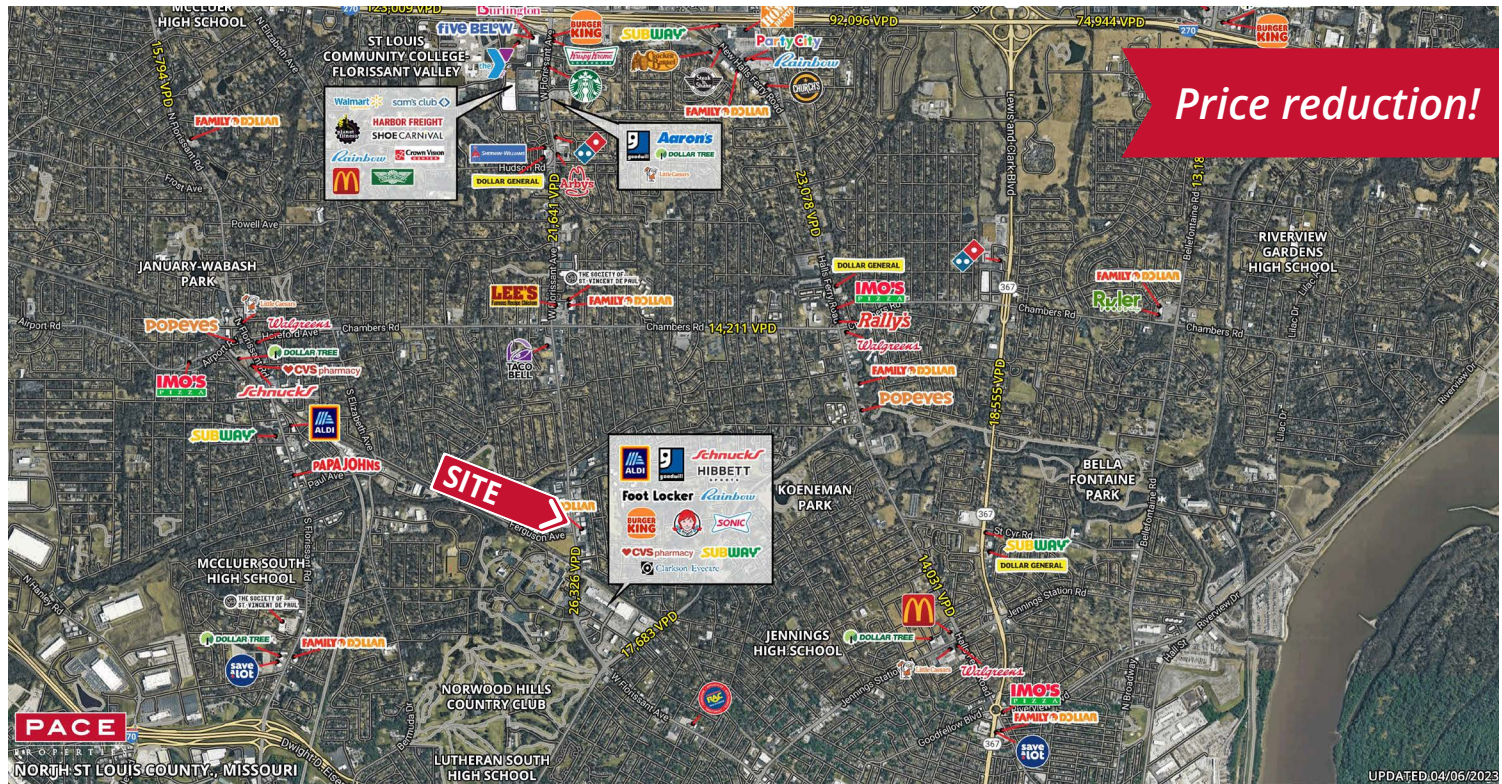
Daytime Population

6,910 | 59,435 | 156,940



Median Household Income

\$40,663 | \$44,347 | \$47,754



LAND FOR SALE

9161 West Florissant Avenue | Ferguson, Missouri 63136

1.67 Acres | Sale Price: \$325,000

PROPERTY DETAILS

Easy access

Great visibility from West Florissant Avenue

Ample parking

Area retailers include: Schnucks, Aldi, PNC Bank, Chase Bank, US Bank, Goodwill, Hibbett Sports, Burger King, Wendy's, & China King

Kate Grewe

314.785.7662

kgrewe@paceproperties.com

Patrick Willett

314.785.7631

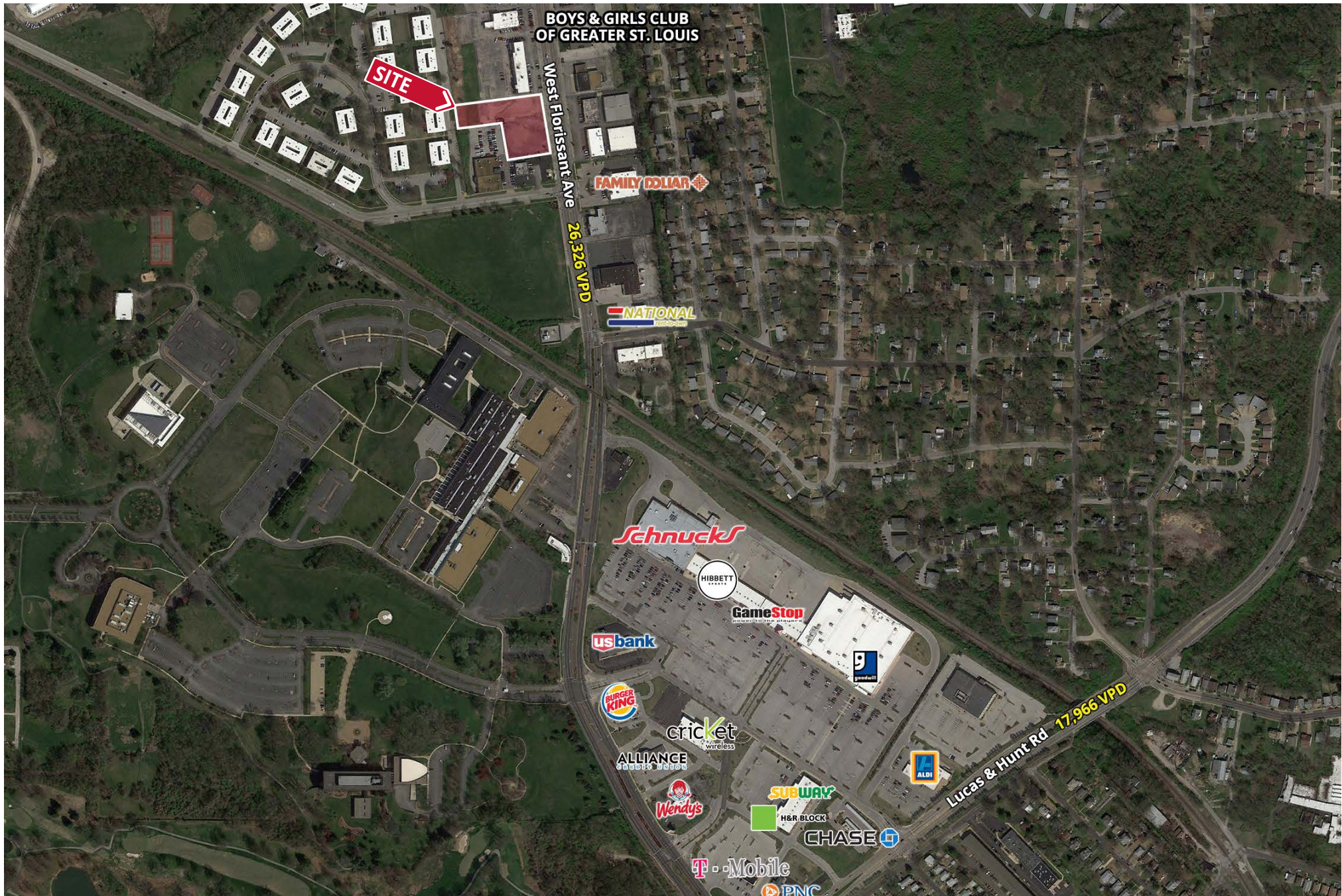
pwillett@paceproperties.com

PACEPROPERTIES.COM | 314.968.9898

1401 South Brentwood Boulevard, Suite 900 | St. Louis, Missouri 63144

The information contained herein is not warranted, although it has been obtained from the owner/landlord of the subject property or from other sources that Pace Properties, Inc. deems reliable, and is subject to change without notice. Owner/landlord and Pace Properties, Inc. make no representations as to the environmental condition of the subject property and recommend tenant's independent investigation.

Zoomed Aerial



PACEPROPERTIES.COM | 314.968.9898

1401 South Brentwood Boulevard, Suite 900 | St. Louis, Missouri 63144

The information contained herein is not warranted, although it has been obtained from the owner/landlord of the subject property or from other sources that Pace Properties, Inc. deems reliable, and is subject to change without notice. Owner/landlord and Pace Properties, Inc. make no representations as to the environmental condition of the subject property and recommend tenant's independent investigation.