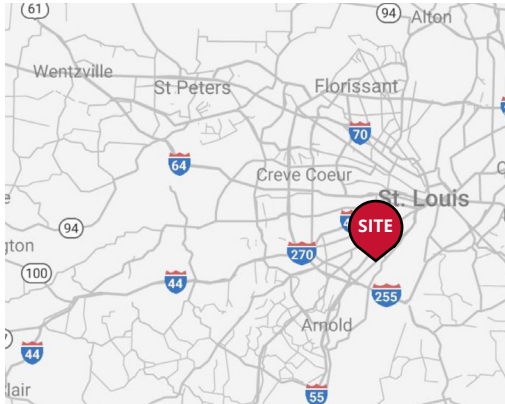


Located in Opportunity Zone
Schnucks-Anchored Just Extended 10 Years



2023 DEMOGRAPHICS

1 Mile | 3 Miles | 5 Miles



Population

12,956 | 86,964 | 246,736



Daytime Population

7,218 | 47,954 | 143,058



Median Household Income

\$66,393 | \$66,017 | \$68,713

INLINE SPACE FOR LEASE | OUTLOT FOR SALE OR LEASE

Lemay Ferry Shopping Center | 1032 Lemay Ferry Road | St. Louis, Missouri 63125

1,020 - 6,400 SF | \$14.00/SF | Triple Nets: \$4.69/SF (2024 estimate)

Land Available: +/- 0.80 Acres | Call for Details

PROPERTY DETAILS

Grocery-anchored; Schnucks recently extended for 10 years, renovated, and expanded

Excellent population density

Inline space for lease

Outlot available for lease or sale

Lauren Berry, CCIM

314.785.7632

lberry@paceproperties.com

Ashley Krekovich

314.785.7613

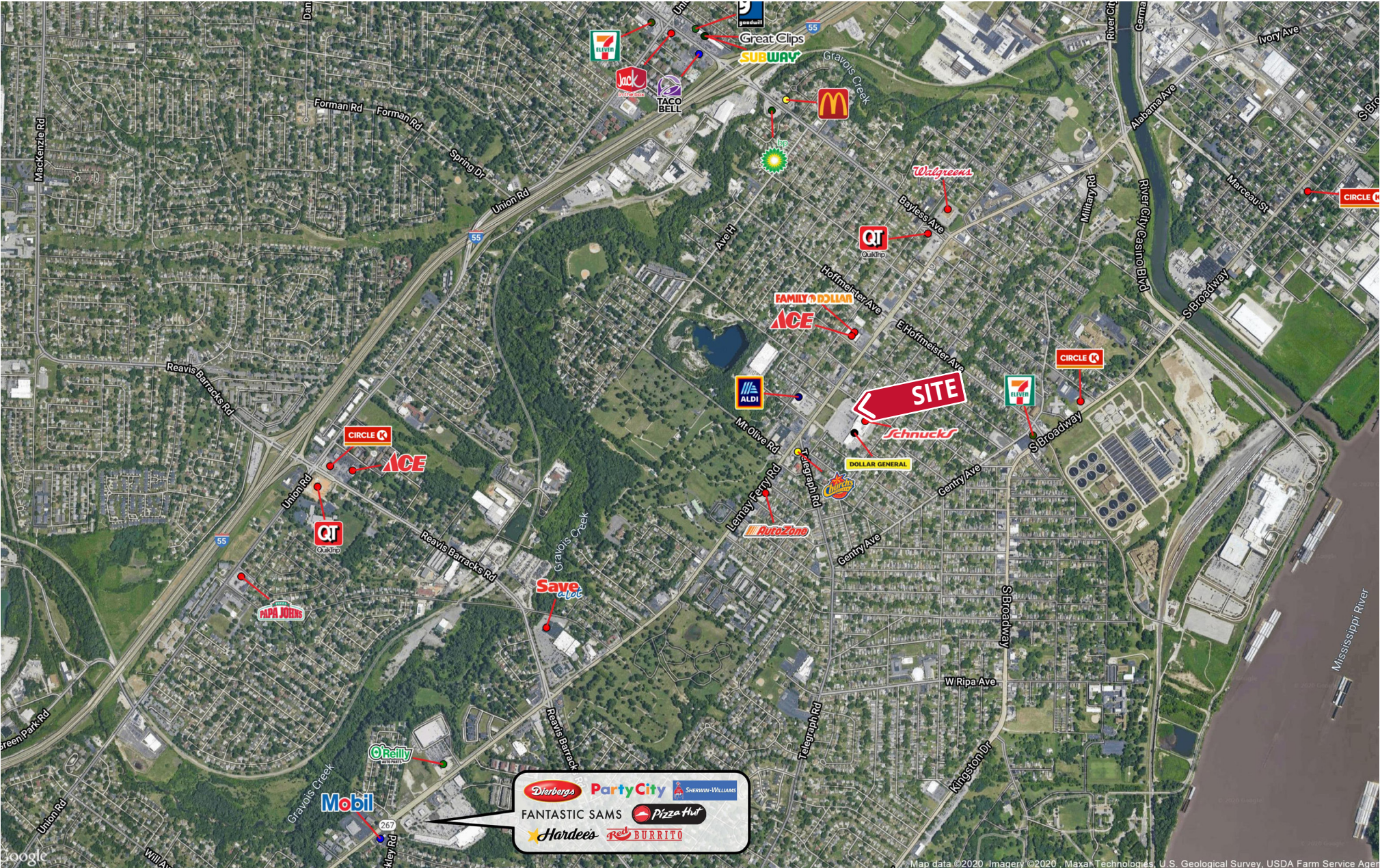
akrekovich@paceproperties.com

PACEPROPERTIES.COM | 314.968.9898

1401 South Brentwood Boulevard, Suite 900 | St. Louis, Missouri 63144

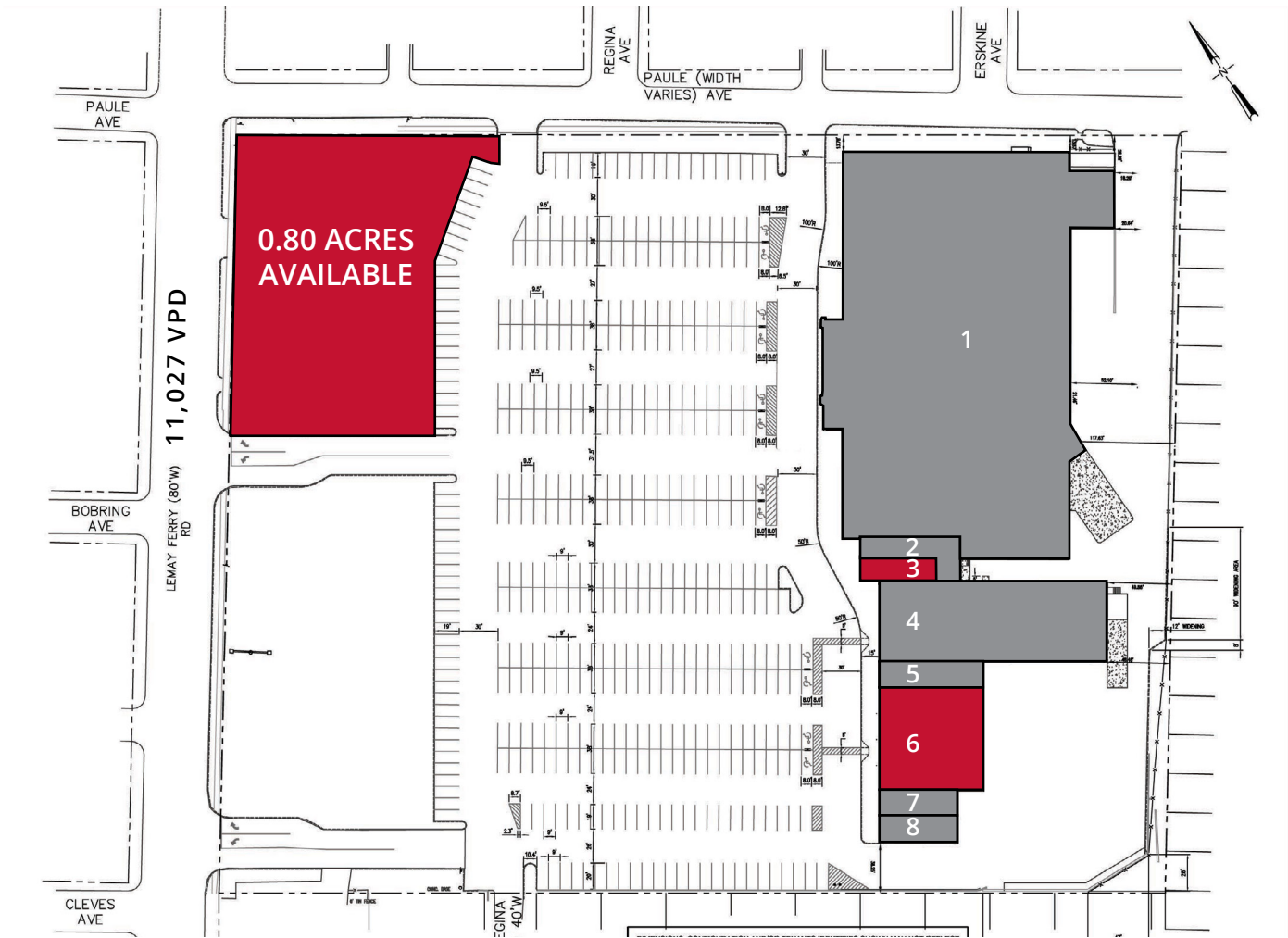
The information contained herein is not warranted, although it has been obtained from the owner/landlord of the subject property or from other sources that Pace Properties, Inc. deems reliable, and is subject to change without notice. Owner/landlord and Pace Properties, Inc. make no representations as to the environmental condition of the subject property and recommend tenant's independent investigation.

Trade Area Aerial



Site Plan

Space	Status	SF
1	Schnucks	56,198
2	Fire Grill	1,629
3	AVAILABLE	1,020
4	Dollar General	10,500
5	China King	1,600
6	AVAILABLE	6,400
7	Jackson Hewitt	1,200
8	Cricket	1,200



Land Available



PACEPROPERTIES.COM | 314.968.9898

1401 South Brentwood Boulevard, Suite 900 | St. Louis, Missouri 63144

The information contained herein is not warranted, although it has been obtained from the owner/landlord of the subject property or from other sources that Pace Properties, Inc. deems reliable, and is subject to change without notice. Owner/landlord and Pace Properties, Inc. make no representations as to the environmental condition of the subject property and recommend tenant's independent investigation.