

2024 DEMOGRAPHICS

1 Mile | 3 Miles | 5 Miles



Population

4,924 | 43,873 | 77,631



Daytime Population

5,658 | 22,561 | 39,443



Median Household Income

\$65,619 | \$109,777 | \$120,389



LAND FOR SALE

Luetkenhaus Boulevard | Wentzville, Missouri 63385

7.43 Acres | Sale Price: \$899,000

PROPERTY DETAILS

Prime commercial land ready for development

Interstate 70 visibility

Easily accessible from 2 interchanges

Zoned C-3 highway commercial

Outdoor storage permitted as accessory use

Close proximity to new Mercy Hospital under construction

Ryan Geringer

314.785.7642

rgeringer@paceproperties.com

Evan Barnett

314.785.7678

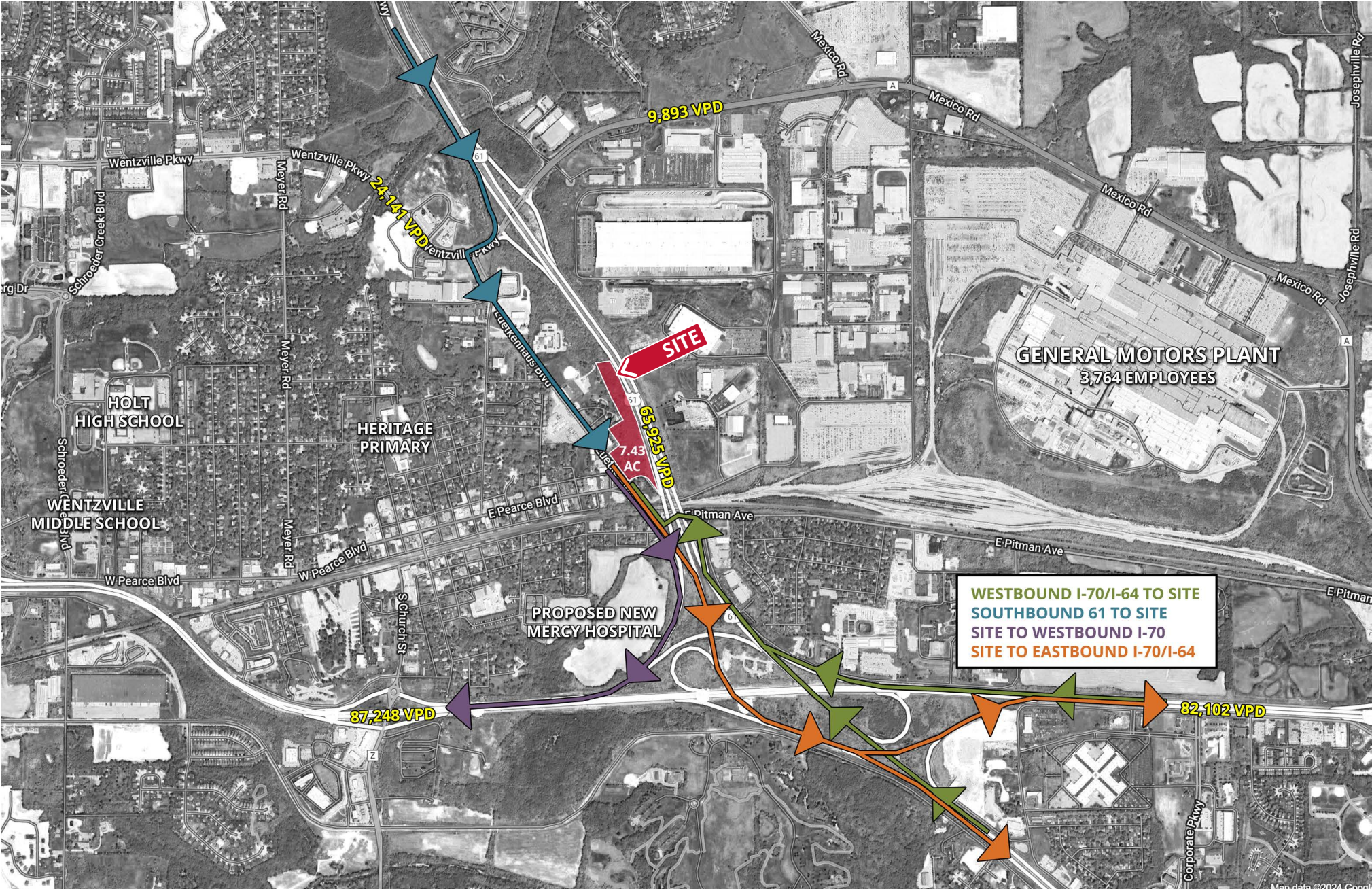
ebarnett@paceproperties.com

PACEPROPERTIES.COM | 314.968.9898

1401 South Brentwood Boulevard, Suite 900 | St. Louis, Missouri 63144

The information contained herein is not warranted, although it has been obtained from the owner/landlord of the subject property or from other sources that Pace Properties, Inc. deems reliable, and is subject to change without notice. Owner/landlord and Pace Properties, Inc. make no representations as to the environmental condition of the subject property and recommend tenant's independent investigation.

Site Access Map



[illegible]